

R:BASE eXtreme 9.5



Working at the R> Prompt



Working at the R> Prompt in R:BASE eXtreme 9.5

by R:BASE Technologies, Inc.

The R> Prompt is the area of R:BASE in which users can enter SQL and R:BASE-specific commands for using a database, and the program in general. The R> Prompt is identified by the characters "R>" displayed on the top left side of the screen.

R:BASE eXtreme 9.5 R> Prompt Help

Copyright © 1982-2014 R:BASE Technologies, Inc.

Information in this document, including URL and other Internet web site references, is subject to change without notice. The example companies, individuals, products, organizations and events depicted herein are completely fictitious. Any similarity to a company, individual, product, organization or event is completely unintentional. R:BASE Technologies, Inc. shall not be liable for errors contained herein or for incidental consequential damages in connection with the furnishing, performance, or use of this material. This document contains proprietary information, which is protected by copyright. Complying with all applicable copyright laws is the responsibility of the user. Without limiting the rights under copyright, no part of this document may be reproduced, stored in or introduced into a retrieval system, or transmitted in any form or by any means (electronic, mechanical, photocopying, recording, or otherwise), or for any purpose, without the express written consent of R:BASE Technologies, Inc. We reserve the right to make changes from time to time in the contents hereof without obligation to notify any person of such revision or changes. We also reserve the right to change the specification without notice and may therefore not coincide with the contents of this document. The manufacturer assumes no responsibilities with regard to the performance or use of third party products.

Products that are referred to in this document may be either trademarks and/or registered trademarks of the respective owners. The publisher and the author make no claim to these trademarks.

The software described in this document is furnished under a license agreement. The software may be used or copied only in accordance with the terms of that agreement. Any unauthorized use or duplication of the software is forbidden.

R:BASE Technologies, Inc. may have patents, patent applications, trademarks, copyrights, or other intellectual property rights covering subject matter in this document. Except as expressly provided in any written license agreement from R:BASE Technologies, Inc., the furnishing of this document does not give you any license to these patents, trademarks, copyrights, or other intellectual property.

Trademarks

R:BASE®, Oterro®, R:BASE C/S:![®], R:Admin®, R:Scope®, R:WEB Suite®, R:Mail®, R:Charts®, R:Spell Checker®, R:Docs®, R:BASE Editor®, R:Scheduler®, R:BASE Plugin Power Pack®, R:Style®, R:Code®, R:Struc®, R:Zip®, R:Fax®, R:QBDataDirect®, R:QBSynchronizer®, R:QBDBExtractor®, R:Mail Editor®, R:Linux®, R:BASE Dependency Viewer®, R:Archive®, R:Chat®, R:DCC Client®, R:Mail Editor®, R:Code®, R:Column Analyzer®, R:DF Form Filler®, R:FTPClient®, R:SFTPClient®, R:Map®, R:GeoCoder®, R:PDF Form Filler®, R:PDFWorks®, R:PDFMerge®, R:PDFSearch®, R:Installer®, R:Updater®, R:Capture®, R:RemoteControl®, R:Synchronizer®, R:Biometric®, R:CAD Viewer®, R:DXF®, R:Twain2PDF®, R:Tango®, R:SureShip®, R:BASE Total Backup®, R:Scribbler®, R:SmartSig®, R:JobTrack®, R:TimeTrack®, R:Syntax®, R:WatchDog®, R:Manufacturing®, R:Merge®, R:Documenter®, R:Magellan®, R:WEB Reports®, R:WEB Gateway®, R:ReadyRoute®, R:Accounting®, R:Contact®, R:DWF Viewer®, R:Java®, R:PHP® and Pocket R:BASE® are trademarks or registered trademarks of R:BASE Technologies, Inc. All Rights Reserved. All other brand, product names, company names and logos are trademarks or registered trademarks of their respective companies.

Windows, Windows 8, Windows 7, Vista, Windows Server 2003-2012, XP, and Windows 2000 are registered trademarks of Microsoft Corporation.

Printed: June 2014 in Murrysville, PA

First Edition

Table of Contents

Part I Introduction	2
Part II Using the R> Prompt	4
Part III Command History	6
Part IV Launching the Help	9
Part V Using Commands and Variables	11
Part VI Settings	15
Part VII Customizing the R> Window	18
Part VIII Hot Keys	20
Index	0

Part

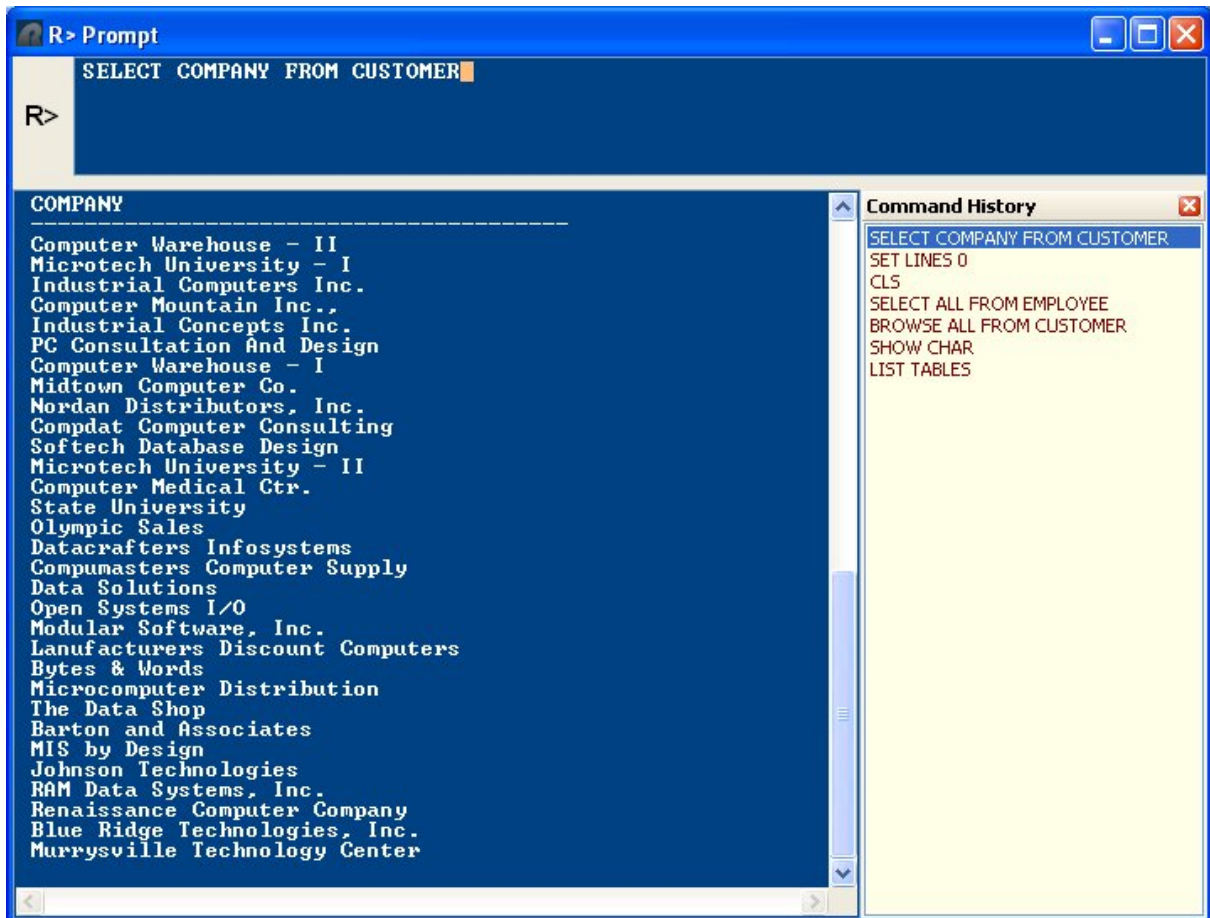


1 Introduction

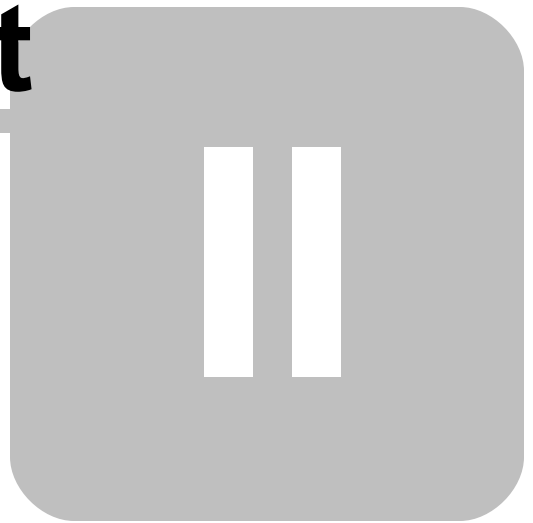
Users can perform database actions by either choosing menu options or by entering R:BASE commands at the R> Prompt. For example, to start the R:BASE Editor, you can choose "Tools" > "R:BASE Editor" from the Menu Bar, or you can enter RBEDIT at the R> Prompt.

Using R:BASE commands requires only that you know what command you want and how the command needs to be phrased (syntax) for R:BASE to understand it. The R:BASE online help provides the complete command syntax for all R:BASE commands within the Command Index. The easiest way to become familiar with the R:BASE R> Prompt is to use it and the R:BASE commands.

To display the R> Prompt, select the "R> Prompt" button (third from the left) on the main R:BASE toolbar, or press the [Ctrl]+[R] key combination.



Part



2 Using the R> Prompt

The R> Prompt window is divided into three parts; the Input Console, the Output Console, and the Command History panel.

The Input Console, which is next to the "R>", is the portion that accepts commands. When entering a command at the Input Console, the text is typed and then the [Enter] key is pressed to send the command to the R:BASE engine for interpretation. The typed command at the input console is then cleared and appears below at the Output Console. The Output Console display the results and feedback from commands entered. The Command History panel stores all commands that were entered at the R>, and allows users to recycle commands entered. Text can be copied and pasted within the Input Console and copied from the Output Console.

There are several keyboard keys and combinations that will improve productivity R> Prompt, for example pressing the [Page Up] and [Page Down] keys to place the command from the list within the R> Prompt Input console. The following hot keys are supported:

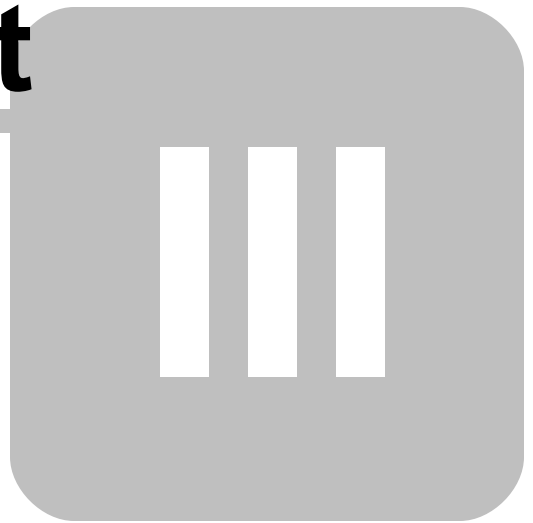
Functionality:

[F3]	Data Dictionary
[F5]	Display a command syntax template for the current command as defined in the COMMAND.INI file
[Ctrl+X]	Cut
[Ctrl+C]	Copy
[Ctrl+V]	Paste
[Ctrl+Z]	Undo
[Ctrl+A]	Select All
[Ctrl+H]	Displays/Hides the Command History dialog
[Ctrl+W]	Launches the Watch Variables dialog
[Page Up]	Repeats the last command entered
[Page Down]	Displays the first command entered
[Ctrl+Right]/ [Ctrl+Left]	Skips from word to word
[Ctrl+Backspace]	Deletes one word at a time to the left of the cursor
[Ctrl+Delete]	Deletes one word at a time from the current cursor position
[Ctrl+Insert]	Copies command from Input Console to the clipboard
[Shift+Enter]	Retains the entered command within the Input Console

Display and Navigation:

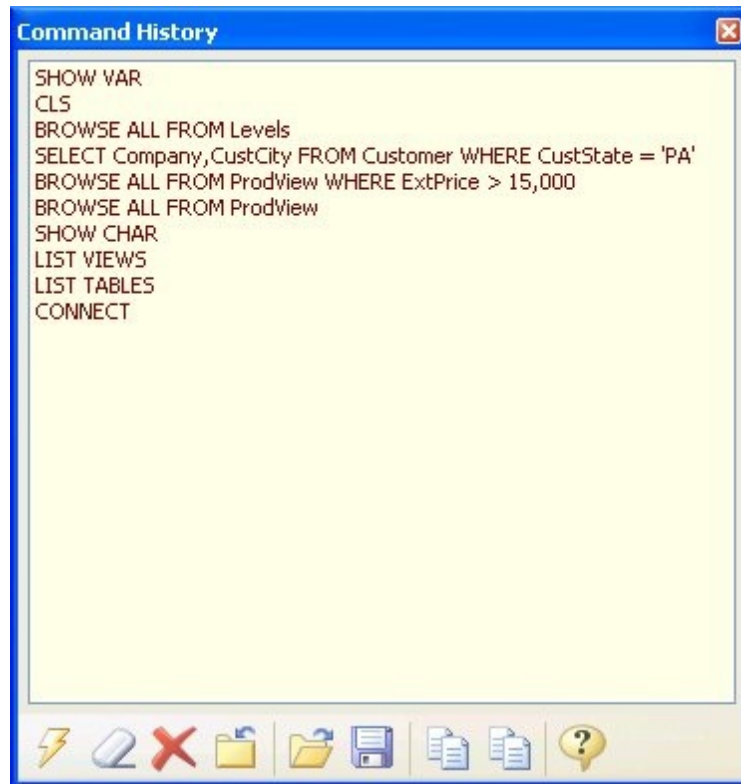
[F1]	Main R:BASE Help
[Ctrl+F3]	Help Index
[Ctrl+F4]	Close R> Prompt window
[Ctrl+F6]	Next Window
[Ctrl+L]	Launches the Database Explorer
[Ctrl+R]	Launches the R> Prompt
[Ctrl+E]	Launches the R:BASE Editor
[Shift+F1]	Help about the R> Prompt
[Shift+F3]	Help Index
[Shift+F4]	Tile Windows
[Shift+F5]	Cascade Windows
[Shift+F9]	Help Search

Part



3 Command History

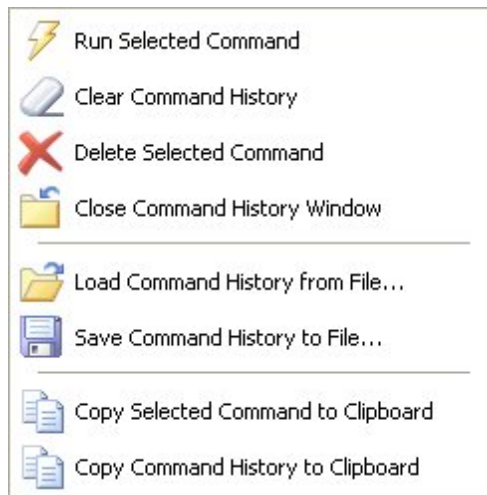
The Command History panel allows users to recycle commands entered and run from the R> Prompt console.



The Command History panel is displayed within the R> Prompt window, by default. If it is not displayed, you can access the Command History panel, using the [Ctrl]+[H] keys, or from within the R> Prompt Settings.

To execute any command displayed within the Command History panel, you can either double click on a command, or select the command from the list, which will display the command at the R> Prompt Input console, and then press the [Enter] key.

Other options are available for the Command History panel when you right click within the panel

**Notes:**

- The Command History panel can be undocked and docked within R:BASE. To undock the panel, select the panel caption bar where the text "Command History" is displayed. To dock the panel, double click on the same caption bar.
- The Command History contents can be saved so that each time R:BASE is launched, the history is still displayed.
- Please be aware that while there is no set limit to the amount of commands that you can have remain in the memory, there are practical limitations to the amount which you will want to keep. The added overhead of a large command history list may cause some machines to experience slower processing speeds. Therefore, the Command History list should be kept to a minimum by using the "Clear Command History" option at regular intervals.

Part



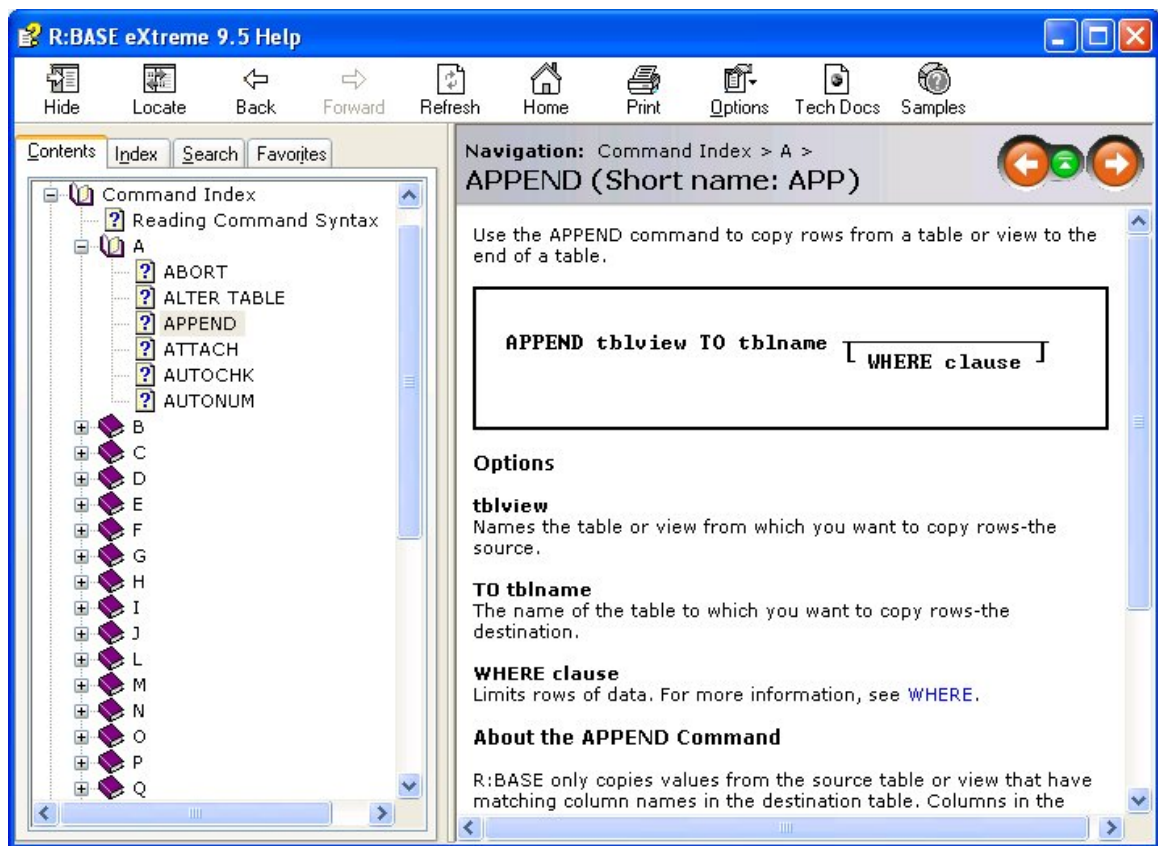
4 Launching the Help

To find the correct syntax for a command, you can look it up in the Command Index, or use the R> to launch the help. If an incorrect spelling for a command is entered, the error message "Unrecognized command - retype it" is displayed. If any invalid parameters or invalid sequence is entered, the error message "Syntax is incorrect for the command" is displayed.

R:BASE will display screens from the help file when using the word HELP at the R> Prompt. For example enter "HELP" and press the [Enter] key at the R> Prompt. R:BASE will display the main help window.

The R> Prompt will also accept the name of a R:BASE command after the HELP keyword, such as SELECT, or APPEND to open the help file for that specific command.

After entering "HELP APPEND" at the R> Prompt, followed by the [Enter] key, R:BASE will display the help window, with the right pane showing the APPEND command.



Part



5 Using Commands and Variables

Variables have many uses at the R> Prompt as well as all other modules of R:BASE. You can define variables or use expressions to calculate subtotals and totals, manipulate text values, draw data from tables, perform complex mathematical operations, return financial data such as interest rates, or perform many other functions.

A variable is an item that holds data. It is similar to a column, except that a variable is not connected to any particular table in a database. You can define a variable at the R> Prompt and then use the contents of the variable with more than one database. Variables, then, are global within R:BASE.

An expression is the computation that gives a variable its value. Expressions can also provide the value of a column as in computed columns, or they can be used to calculate values on the fly with the **SELECT** command.

Follow the below instructions to work with variables at the R> Prompt

1. Enter **SET VARIABLE v1 = 100**

This defines a variable named v1 to a value of 100. Since you did not specify a data type, R:BASE automatically assigns an INTEGER data type because 100 is a whole number without a decimal point.

2. Enter **SHOW VARIABLE**

R:BASE displays the list of variables, both the system variables (#DATE, #TIME, #PI, SQLCODE, SQLSTATE, and #NOW) and the variables you define. The display looks similar to this:

```
R>SHOW VARIABLE
Variable          = Value                                     Type
-----
#DATE             = 06/05/2014                                     DATE
#TIME             = 1:55 PM                                        TIME
#PI               = 3.14159265358979                             DOUBLE
SQLCODE           = 0                                              INTEGER
SQLSTATE          = 00000                                         TEXT
#NOW              = 06/05/2014  1:55 PM                          DATETIME
v1                = 100                                           INTEGER
```

You can assign the data type of a variable before or after any value is placed in it as long as the value and the data type are compatible.

3. Enter **SET VARIABLE v1 REAL**

v1 already has the INTEGER value 100, but the data type can be changed to REAL.

4. Enter **SHOW VARIABLE v1**

On the screen, R:BASE displays "100." When you include the variable name on the line with **SHOW VARIABLE**, only the specified variable value is displayed. R:BASE does not display the heading or data types that are shown with the **SHOW VARIABLE** command when it is used without a variable name.

You can abbreviate most commands in R:BASE to the first three characters. If the command has more than one keyword, then each keyword can be abbreviated. Some secondary keywords can be abbreviated to a single character. For example, **SHOW VARIABLE** can be abbreviated to **SHO VAR** or **SHO V**.

You can combine text values together in a variable.

5. Enter **SET VAR text1 = 'Now is the time'**
6. Enter **SET VAR text2 = 'for all good men'**

7. Enter `SHOW VAR`

As you can see, text1 and text2 are assigned TEXT data types.

9. Enter `SET VAR text3 = (.text1 & .text2)`

This combines the two text variables text1 and text2 together into one variable, text3. When you want to use the value of a variable, you precede the variable name with a dot, or period. This tells R:BASE to use the value of the variable, not just the name, as a text string. The ampersand "&" combines text strings and places a space between them. A plus "+" combines text strings without a space.

10. Enter `SHOW VAR text3`

R:BASE displays "**Now is the time for all good men**" on the screen. Because the default display width of a TEXT variable is 30 characters, the last word, men, wraps to a second line.

After entering each of the commands, note that the Command History panel stores all of the commands entered. To reenter any command listed in the Command History panel, double click on it. To display the command at the Input Console, select it.

You can specify the width to display variables.

11. Enter `SHOW VAR text3 = 35`

Notice that the last word does not wrap because you allowed enough space for the full line by adding = 35 following the variable name.

You can do arithmetic for numeric variables as well.

12. Enter `SET VAR v1 = (.v1 + 25)`

13. Enter `SHOW VAR v1`

R:BASE added 25 to the value of the variable v1 to get 125.

R:BASE has a large number Functions included. Functions perform a series of set calculations or convert values into other forms.

14. Enter `SET VAR v2 = (SQRT(.v1))`

Be sure that you always enclose in parentheses any expression containing a function.

15. Enter `SHOW VAR v2`

The **SQRT** function has calculated the square root of the value of v1 and the **SET VARIABLE** command has placed that value into variable v2. The result is a DOUBLE (double-precision real) number.

You can combine many items and functions in a single expression.

16. Enter `SET VAR v3 = (LOG10(.v1) * SQRT(.v1) / EXP(.v2) * 15)`

Use parentheses around expressions to make sure that R:BASE recognizes an expression as an expression rather than a text string. R:BASE calculates expressions more quickly if it does not have to first decide whether or not an expression is to be calculated or simply be treated as a text string.

17. If you want, look at variable v3.

R:BASE displays the DOUBLE data type number 0.004904177044216

You might wonder how you might use these variables once they are defined. Variables have many uses including:

- Calculating the value for a column from other column values, as with computed columns

- Providing a value for comparison to other values to determine if another operation should be performed, as in programs
- Collecting data from a table to use in a calculation
- Passing data between tables or databases
- Temporarily storing totals for the current session

You do not need to keep the created variables, so remove them now. Global variables may be deleted individually or all together. To delete variables, you use the CLEAR command. CLEAR completely removes the variables, not just the value of the variable.

18. Enter **CLEAR ALL VARIABLES** (or the abbreviated form **CLE ALL VAR**).

If you enter SHOW VARIABLE again, you will see that R:BASE has removed all the global variables you entered. Only the system variables remain.

If you want, you can exit from R:BASE at this time.

19. At the R> Prompt, enter **EXIT**

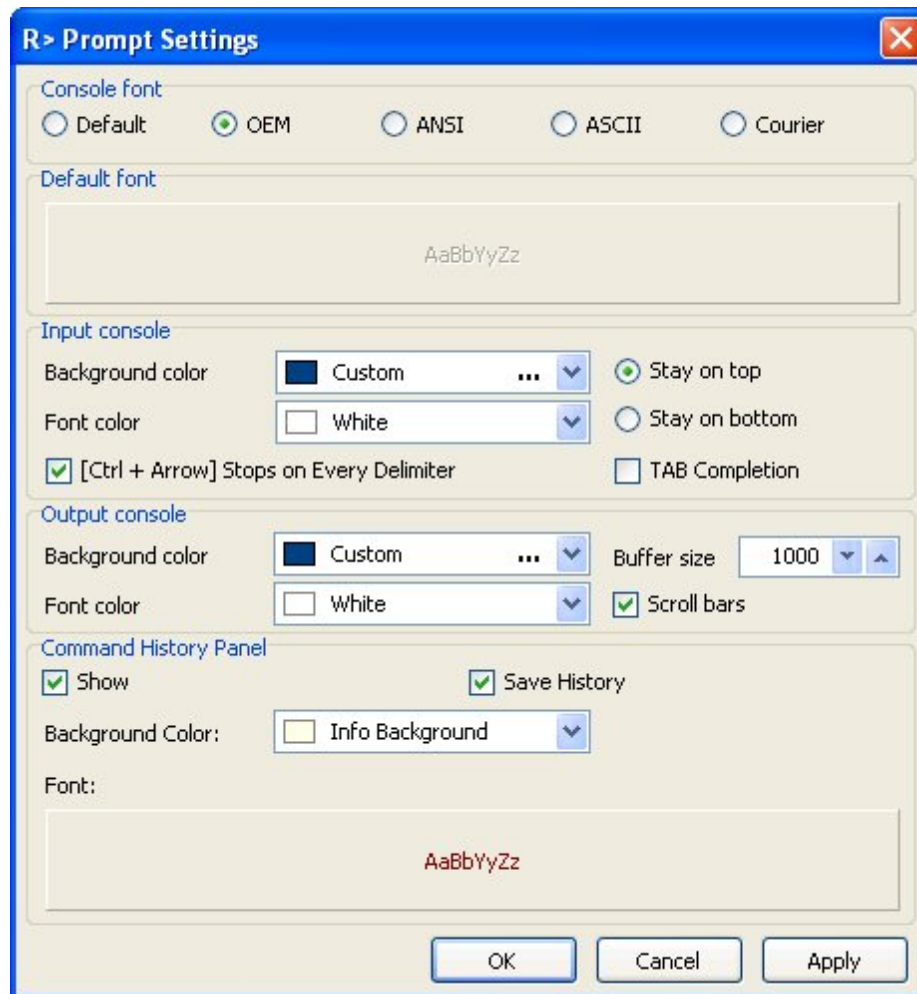
You are then returned to the operating system.

Part



6 Settings

The R> Prompt Settings allows users to alter the font style and color, background colors, and other settings within the R> Prompt window. To access the R> Prompt Settings, select "Settings" > "R> Prompt" from the main Menu Bar and the following window will appear:



- ⇒ **Console font**

Determines the Font settings of both portions (Input and Output) of the R> Prompt console

NOTE: To use a font other than OEM, ANSI, ASCII, or Courier, choose "Default" and use the "Default font" area to set the font properties.

- ⇒ **Default font**

Specifies the font style, size and color for both portions (Input and Output) of the R> Prompt console when the "Default" option is chosen within Console Font.

- ⇒ **Input console**

Determines the settings for the input portion of the R> Prompt console

Background Color

Specifies the background color of the Input console

Font Color

Specifies the font color for the Input console

Stay on Top

Keeps the Input console position above the Output console

Stay on Bottom

Keeps the Input console position below the Output console

[Ctrl + Arrow] Stops on Every Delimiter

When checked, the R> Prompt cursor will stop on every delimiter value

TAB Completion

When enabled, the input console will complete the syntax for a command when the [Tab] key is pressed

⇒ **Output console**

Determines the settings for the output portion of the R> Prompt console

Background Color

Specifies the background color of the Output console

Font Color

Specifies the font color for the Output console

Buffer Size

Determines the amount of output which will be made available in memory

Scroll Bars

When checked, scroll bars will appear to view output which is out of the screen range

⇒ **Command History Panel**

Show - specifies whether the "Command History" panel is displayed

Save History - specifies whether the "Command History" is loaded back into the panel after restarting R:BASE

Background Color - specifies the background color of the output console

Font - specifies the font style, size and color for the output console

Part



7 Customizing the R> Window

Users can modify various settings for the R> Prompt, such as font type, background and font colors, and more.

Before continuing, open the R> Prompt to see the changes for some of the settings.

To change the console font:

1. Select "Settings" > "R> Prompt" from the main Menu Bar
2. In the "R> Prompt Settings" dialog, select the "Default" radio button within the "Console font" panel
3. In the "Default font" panel below, select the "AaBbYyZz" text, and select a different font from the displayed dialog.
4. Select "OK", then the "OK" button again.

The console font for the Input and Output Console will be changed.

To change the Background Color for the Input Console:

1. Select "Settings" > "R> Prompt" from the main Menu Bar
2. In the "R> Prompt Settings" dialog, select the "Background color" drop-down menu within the "Input console" panel
3. Change the color to another value
4. Select the the "OK" button. "Apply" may also be used to review the setting.

The background color for the Input Console should now reflect your new color selection.

To change the Background Color for the Output Console:

1. Select "Settings" > "R> Prompt" from the main Menu Bar
2. In the "R> Prompt Settings" dialog, select the "Background color" drop-down menu within the "Output console" panel
3. Change the color to another value
4. Select the the "OK" button. "Apply" may also be used to review the setting.

The background color for the Output Console should now reflect your new color selection.

The "font colors" for the Input and Output Console can also be changed.

The R> Prompt "Buffer Size" setting controls the amount of output which will be displayed in the Output Console.

To increase the Output Console buffer size:

1. Select "Settings" > "R> Prompt" from the main Menu Bar
2. In the "R> Prompt Settings" dialog, overwrite the value of 1000 with 10000 for the "Buffer size" value within the "Output console" panel
3. Select the the "OK" button.

To change the Background Color for the Command History:

1. Select "Settings" > "R> Prompt" from the main Menu Bar
2. In the "R> Prompt Settings" dialog, select the "Background color" drop-down menu within "Command History Panel"
3. Change the color to another value
4. Select the the "OK" button. "Apply" may also be used to review the setting.

The background color for the Command History should now reflect your new color selection.

Any of the other available settings can also be used to customize the R> Prompt window.

Part



8 Hot Keys

The following hot keys are supported while at the R> Prompt:

Functionality:

[F3]	Data Dictionary
[F5]	Display a command syntax template for the current command as defined in the COMMAND.INI file
[Ctrl+X]	Cut
[Ctrl+C]	Copy
[Ctrl+V]	Paste
[Ctrl+Z]	Undo
[Ctrl+A]	Select All
[Ctrl+H]	Displays/Hides the Command History dialog
[Ctrl+W]	Launches the Watch Variables dialog
[Page Up]	Repeats the last command entered
[Page Down]	Displays the first command entered
[Ctrl+Right]/ [Ctrl+Left]	Skips from word to word
[Ctrl+Backspace]	Deletes one word at a time to the left of the cursor
[Ctrl+Delete]	Deletes one word at a time from the current cursor position
[Ctrl+Insert]	Copies command from Input Console to the clipboard
[Shift+Enter]	Retains the entered command within the Input Console

Display and Navigation:

[F1]	Main R:BASE Help
[Ctrl+F3]	Help Index
[Ctrl+F4]	Close R> Prompt window
[Ctrl+F6]	Next Window
[Ctrl+L]	Launches the Database Explorer
[Ctrl+R]	Launches the R> Prompt
[Ctrl+E]	Launches the R:BASE Editor
[Shift+F1]	Help about the R> Prompt
[Shift+F3]	Help Index
[Shift+F4]	Tile Windows
[Shift+F5]	Cascade Windows
[Shift+F9]	Help Search

Notes