

From The Edge:

by

A. Razzak Memon

## Using R: Spell Checker<sup>®</sup> in R: BASE<sup>®</sup> 7.0 for Windows

Trademarks:

R:BASE, Pocket R:BASE, Oterro, R:Capture, R:Charts, R:Code, R:DWF Viewer, R:Java, R:Linux, R:Merge, R:Scheduler, R:Scope, R:Spell Checker, R:Struc,, R:Syntax, R:Style and R:Tango are trademarks or registered trademarks of R:BASE Technologies, Inc. All Rights Reserved. All other brand, product names, company names and logos are trademarks or registered trademarks of their respective companies.

October 1, 2003

From The Edge: Using R: Spell Checker in R:BASE 7.0 for Windows

By: A.  
Razzak  
Memon

---

From the Edge: Using R:Spell Checker® Plugin in R:BASE 7.0 for Windows  
Section: Using Plugins  
Chapter: Running R:BASE Your Way!  
Platform: R:BASE 7.0 for Windows  
Build: Release Version (Build: 7.0.63.201001) and higher

---

**Definition:**

R:Spell Checker® is an "add-on", end-user Spell Check Plugin for TEXT, NOTE, VARCHAR and BLOB (RTF) editing data types using the Database and Variable Controls in R:BASE 7.0 for Windows Form Designer such as DB Edit, DB Memo, DB Rich Text, Variable Edit, Variable Memo and Variable Rich Text.

**Typical Installation:**

R:Spell Checker Plugin includes the following files:

- RSpellChecker.RBL
- Dictionaries (\*.adm)

RSpellChecker.RBL file is installed in the default R:BASE 7.0 for Windows main directory, such as C:\RBTI\RBG7

All dictionaries and related files are installed under C:\RBTI\RSpellChecker\Dictionaries

The following dictionaries are included with the product:

- Afrikaans
- English (US)
- English (Australian)
- Brazilian Portuguese
- English (UK)
- Czech
- Danish
- Dutch
- French
- German
- Norwegian
- Polish
- Russian
- Spanish
- Swedish

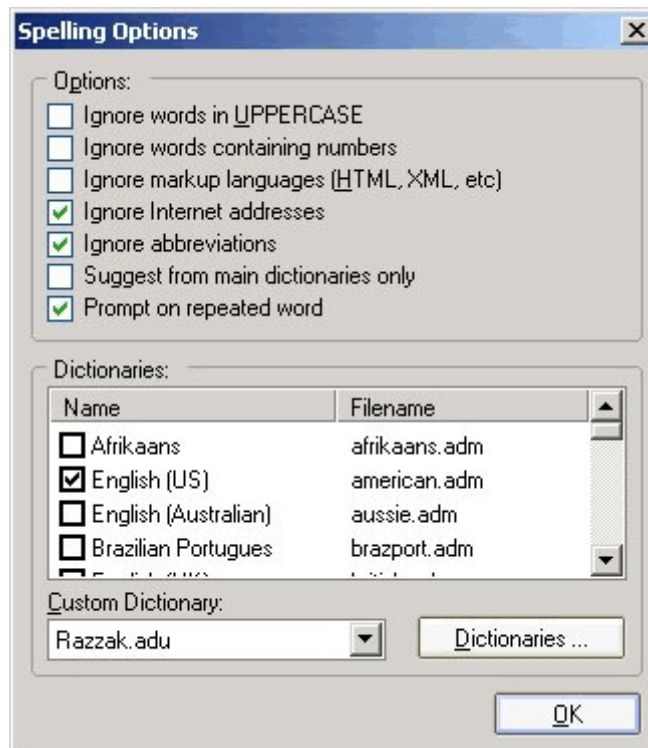
**Syntax for Setup:**

PLUGINS RSpellChecker.RBL SETUP|<Language ID>

Where:

<Language ID>	0	= English
	1	= Swedish
	2	= Brazilian Portuguese
	3	= Afrikaans
	4	= German
	5	= Spanish
	6	= Russian
	7	= Czech
	8	= Dutch
	9	= Danish
	10	= Polish
	11	= Norwegian
	12	= French

Default Language ID is 0 (English)



**Syntax for using RSpellChecker.RBL Plugin:**

`PLUGINS RSpellChecker.RBL <Component ID>|<Language ID>`

Where:

<Component ID> is the user defined Component ID assigned to Database and Variable Controls in Form Designer.

<Language ID>	0	= English
	1	= Swedish
	2	= Brazilian Portuguese
	3	= Afrikaans
	4	= German
	5	= Spanish
	6	= Russian
	7	= Czech
	8	= Dutch
	9	= Danish
	10	= Polish
	11	= Norwegian
	12	= French

Default Language ID is 0 (English)

## How to Use RSpellChecker.RBL Plugin:

The best way to use R:Spell Checker Plugin is to use it in a Form EEP.

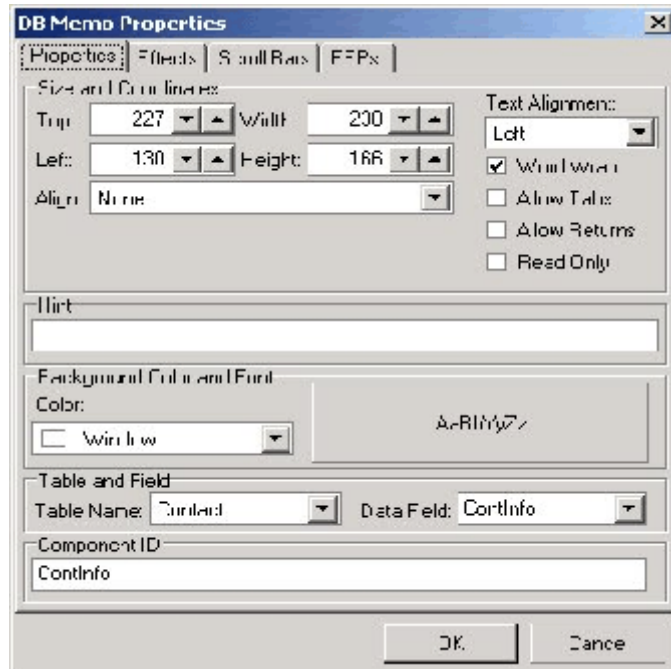
### Scenario A:

If you wish to spell check the contents of NOTE/VARCHAR/BLOB (RTF) for only one control on the form, you may use the following technique:

For this scenario, we'll use ConComp database and ContactsEdit form.

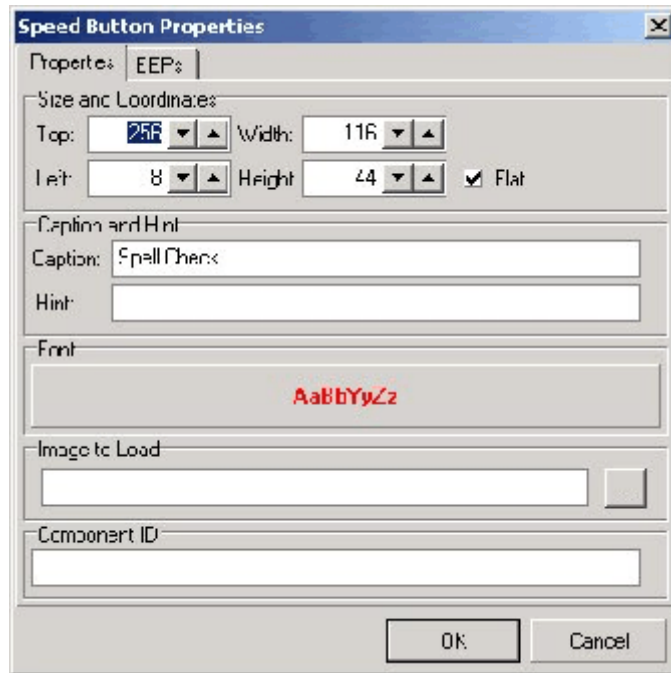
01. Start RBG7 (Release Version, Build: 7.0.63.21001) or higher
02. CONNect ConComp
03. Using RBEDIT create the RSpellChecker\_ContInfo.EEP with the following commands:  

```
-- RSpellChecker_ContInfo.EEP  
PLUGIN RSpellChecker.RBL ContInfo  
RETURN
```
04. Database Explorer > Forms > ContactsEdit > Form Designer >  
Right-Click on **ContInfo** NOTE field (DB Memo Control)  
Select Object Properties  
Type **ContInfo** for Component ID  
Click [OK] to save Object Properties for ContInfo.

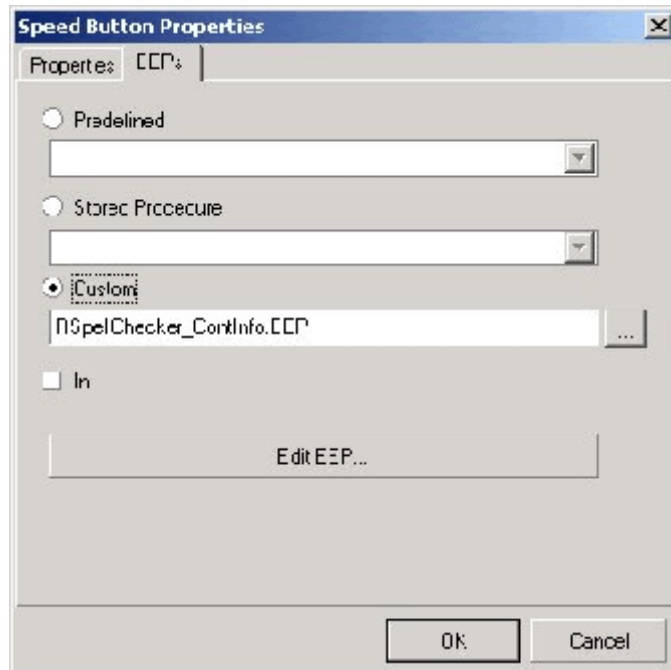


While still in the Form Designer, let's place a "Speed Button" with the following properties:

**Properties:**



**EEPs:**



When you run the form, it should look similar to the following:



If you click on [Spell Check] Speed Button, it should spell check the notes in ContInfo.

## Scenario B:

If you wish to spell check the contents of every TEXT, NOTE, VARCHAR, BLOB (RTF) for all controls on the form (making it universal), then you may use the following technique:

For this scenario, we'll use ConComp database and ContactsEdit form also.

01. Start RBG7 (Release Version, Build: 7.0.63.21001) or higher
02. CONNect ConComp
03. Using RBEDIT create the RSpellChecker.EEP with the following commands:

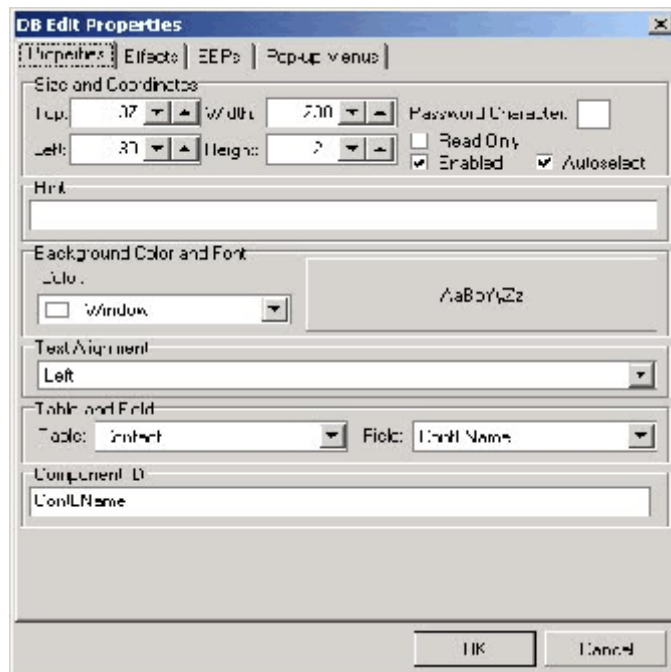
```
-- RSpellChecker.EEP
```

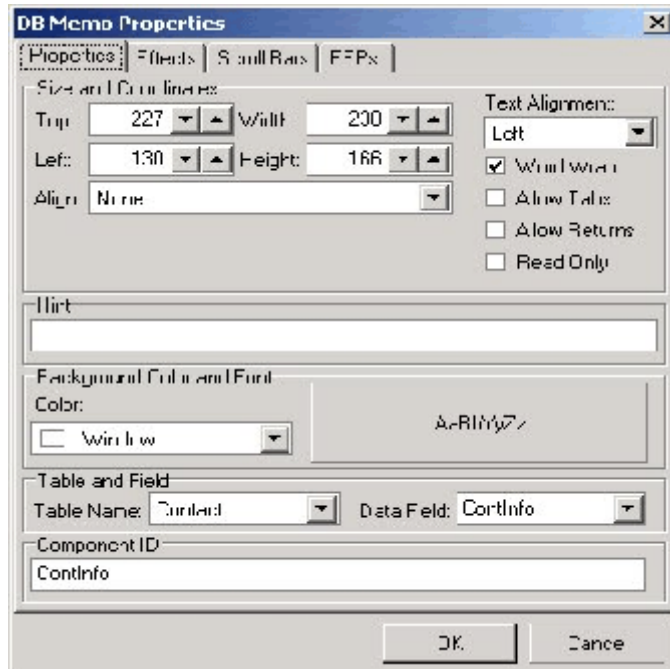
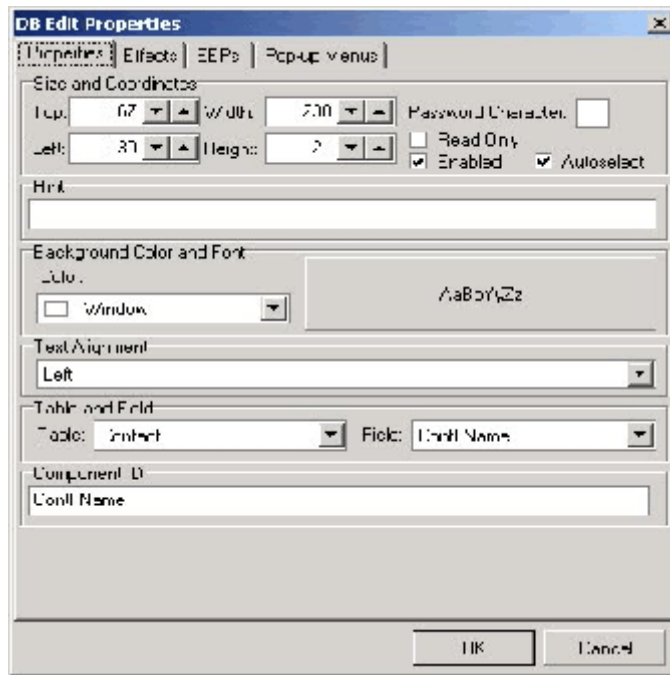
```
PLUGIN RSpellChecker.RBL &RBTI_Form_ColName  
RETURN
```

04. Database Explorer > Forms > ContactsEdit > Form Designer >

Let's assign the Component IDs for:

```
ContLName  
ContFName  
ContInfo
```

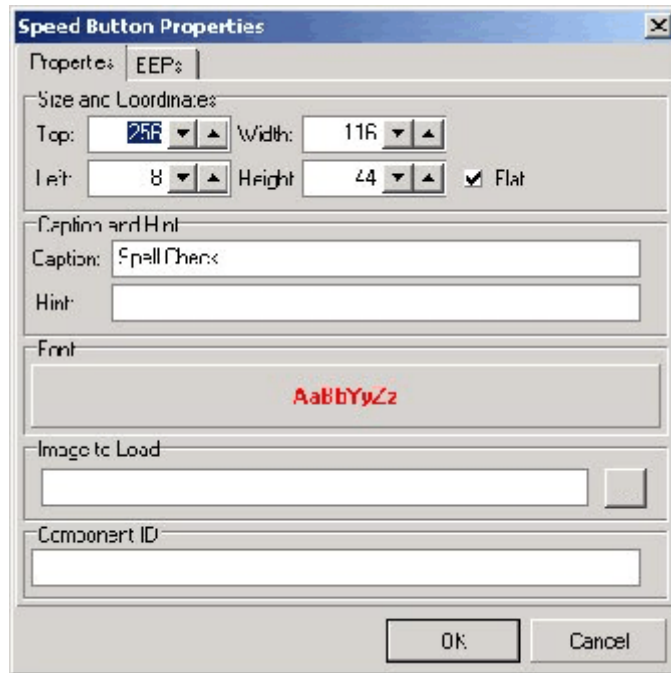




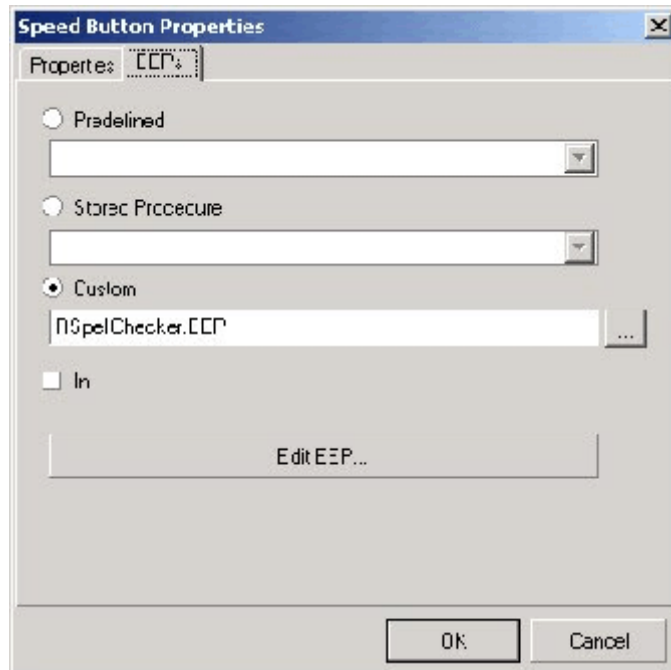
As you can see we have used the same name for Component ID as the actual column name.

While still in the Form Designer, let's place a "Speed Button" with the following properties:

**Properties:**



**EEPs:**



When you run the form, it should look similar to the following:

The screenshot shows a window titled "Existing Contact(s)" with a light green background. At the top, the title "Existing Contact(s)" is written in a decorative font. Below the title, there are several input fields and a photo. The "Customer:" field is a dropdown menu showing "Midtown Computer Co.". The "Last Name:" field contains "Jones", the "First Name:" field contains "Eddy", and the "Phone Number:" field contains "2-277-5000". The "Information Notes:" field contains the text "Detailed the telephone of the business". To the right of the text fields is a photo of a woman with brown hair wearing a maroon turtleneck. Below the text fields is a "Spell Check" button with a green checkmark icon. At the bottom of the form, there are six navigation buttons: "First", "Next", "Previous", "Last", "Delete", and "Save and Exit".

If the Last Name (ContLName) field is focused and you click on [Spell Check] Speed Button, it will check the spelling for Last Name.

If the First Name (ContFName) field is focused and you click on [Spell Check] Speed Button, it will check the spelling for First Name.

If the Information Notes (ContInfo) field is focused and you click on [Spell Check] Speed Button, it will check the spelling for Information Notes.

So, the big question is how does it know or how does it work?

Well, Forms Runtime always creates the following RBTI System Variables:

```
RBTI_FORM_COLNAME  
RBTI_FORM_COLVALUE  
RBTI_FORM_DIRTYVAR  
RBTI_FORM_FORMNAME  
RBTI_FORM_TBLNAME  
RBTI_FORM_VARNAME  
RBTI_FORM_VARVALUE
```

When you click on any field, in the example above, i.e., either ContLName, ContFName or ContInfo, the current value for RBTI\_FORM\_COLNAME is assigned. Then, if we click on the [Check Spelling] Speed Button, an EEP is fired with the following code:

```
PLUGIN RSpellChecker.RBL &RBTI_Form_ColName  
RETURN
```

*Enjoy the Unbounded Possibilities with Industrial-Strength, True-Relational and Multi-User Database Management System.*