

# R:BASE eXtreme 9.5



## Understanding Cue Banners and Balloon Tips



## **Understanding Cue Banners and Balloon Tips**

---

*by R:BASE Technologies, Inc.*

*In R:BASE, there are many ways to program some manner of communication with the end users. The use of Cue Banners and Balloon Tips are a few more methods to provide another form of instruction to end users.*

# Understanding Cue Banners and Balloon Tips in R:BASE eXtreme 9.5

**Copyright © 1982-2014 R:BASE Technologies, Inc.**

Information in this document, including URL and other Internet web site references, is subject to change without notice. The example companies, individuals, products, organizations and events depicted herein are completely fictitious. Any similarity to a company, individual, product, organization or event is completely unintentional. R:BASE Technologies, Inc. shall not be liable for errors contained herein or for incidental consequential damages in connection with the furnishing, performance, or use of this material. This document contains proprietary information, which is protected by copyright. Complying with all applicable copyright laws is the responsibility of the user. Without limiting the rights under copyright, no part of this document may be reproduced, stored in or introduced into a retrieval system, or transmitted in any form or by any means (electronic, mechanical, photocopying, recording, or otherwise), or for any purpose, without the express written consent of R:BASE Technologies, Inc. We reserve the right to make changes from time to time in the contents hereof without obligation to notify any person of such revision or changes. We also reserve the right to change the specification without notice and may therefore not coincide with the contents of this document. The manufacturer assumes no responsibilities with regard to the performance or use of third party products.

Products that are referred to in this document may be either trademarks and/or registered trademarks of the respective owners. The publisher and the author make no claim to these trademarks.

The software described in this document is furnished under a license agreement. The software may be used or copied only in accordance with the terms of that agreement. Any unauthorized use or duplication of the software is forbidden.

R:BASE Technologies, Inc. may have patents, patent applications, trademarks, copyrights, or other intellectual property rights covering subject matter in this document. Except as expressly provided in any written license agreement from R:BASE Technologies, Inc., the furnishing of this document does not give you any license to these patents, trademarks, copyrights, or other intellectual property.

## Trademarks

R:BASE®, Oterro®, R:BASE C/S:!<sup>®</sup>, R:Admin®, R:Scope®, R:WEB Suite®, R:Mail®, R:Charts®, R:Spell Checker®, R:Docs®, R:BASE Editor®, R:Scheduler®, R:BASE Plugin Power Pack®, R:Style®, R:Code®, R:Struc®, R:Zip®, R:Fax®, R:QBDataDirect®, R:QBSynchronizer®, R:QBDBExtractor®, R:Mail Editor®, R:Linux®, R:BASE Dependency Viewer®, R:Archive®, R:Chat®, R:DCC Client®, R:Mail Editor®, R:Code®, R:Column Analyzer®, R:DF Form Filler®, R:FTPClient®, R:SFTPClient®, R:Map®, R:GeoCoder®, R:PDF Form Filler®, R:PDFWorks®, R:PDFMerge®, R:PDFSearch®, R:Installer®, R:Updater®, R:Capture®, R:RemoteControl®, R:Synchronizer®, R:Biometric®, R:CAD Viewer®, R:Twain2PDF®, R:Tango®, R:SureShip®, R:BASE Total Backup®, R:Scribbler®, R:SmartSig®, R:JobTrack®, R:TimeTrack®, R:Syntax®, R:WatchDog®, R:Manufacturing®, R:Merge®, R:Documenter®, R:Magellan®, R:WEB Reports®, R:WEB Gateway®, R:ReadyRoute®, R:Accounting®, R:Contact®, R:DWF Viewer®, R:Java®, R:PHP® and Pocket R:BASE® are trademarks or registered trademarks of R:BASE Technologies, Inc. All Rights Reserved. All other brand, product names, company names and logos are trademarks or registered trademarks of their respective companies.

Windows, Windows 8, Windows 7, Vista, Windows Server 2003-2012, XP, and Windows 2000 are registered trademarks of Microsoft Corporation.

Printed: January 2014 in Murrysville, PA

First Edition

# Table of Contents

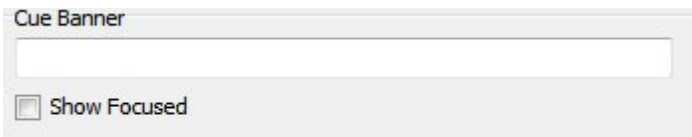
|   |           |
|---|-----------|
| <b>Part I Cue Banner Display in DB/Variable Edit Fields</b> | <b>2</b>  |
| <b>Part II Balloon Tip Hint in DB/Variable Edit Fields</b>  | <b>6</b>  |
| <b>Part III Feedback</b>                                    | <b>9</b>  |
| <b>Part IV Useful Resources</b>                             | <b>11</b> |
| <b>Index</b>  | <b>12</b> |

**Part**



## 1 Cue Banner Display in DB/Variable Edit Fields

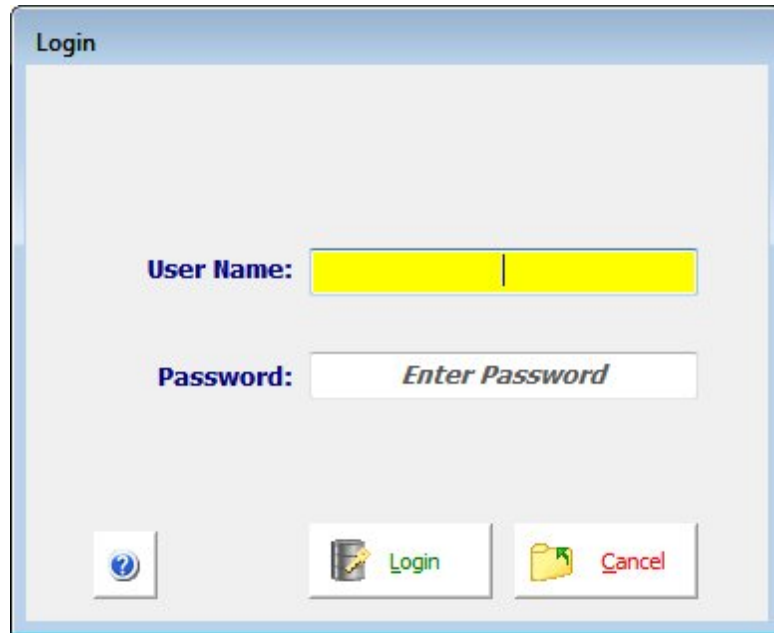
The cue banner displays a faint, or grayed, text message that appears in a field. The cue banner is displayed within the field until the cursor focus lands on the field or when keystrokes are entered, after which the message disappears. The cue banner can be used with DB Edit and Variable Edit controls, and the settings are available on the "Additional" tab of the object properties. A message and show focused setting are available for the cue banner.

|   |  |
|---|--|
| <p>⇒ <b>Cue Banner</b><br/>Specifies a text hint to appear in the field, which disappears when the focus lands on the field</p> <p><i>Show Focused</i><br/>Specifies if the hint remains until keystrokes are pressed (Windows Vista, 7, and higher only)</p> |  |
|---|--|

In the following sample form, the cue banner "Enter User Name" and "Enter Password" are displayed in the edit fields.

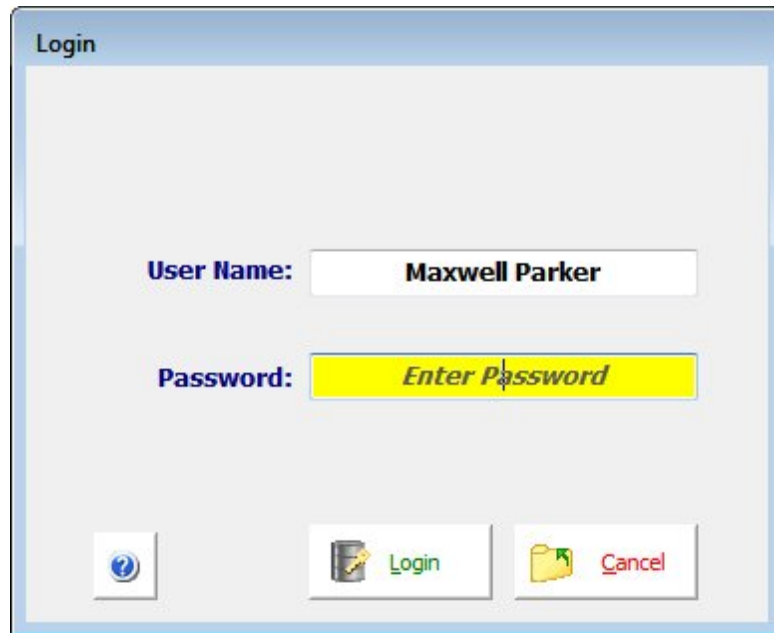


Once the focus lands on the "User Name" field, the cue banner disappears.

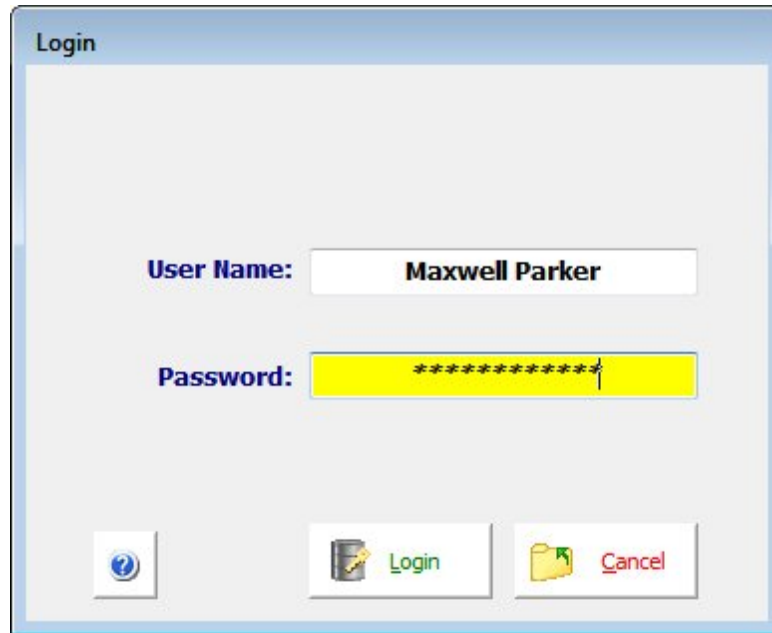


After entering text and moving to the next field, the cue banner does not return for the "User Name" field.

In the "Password" field, the cue banner is set to remain until keystrokes are pressed for the field. This optional setting is only supported with Windows Vista, 7, and higher.



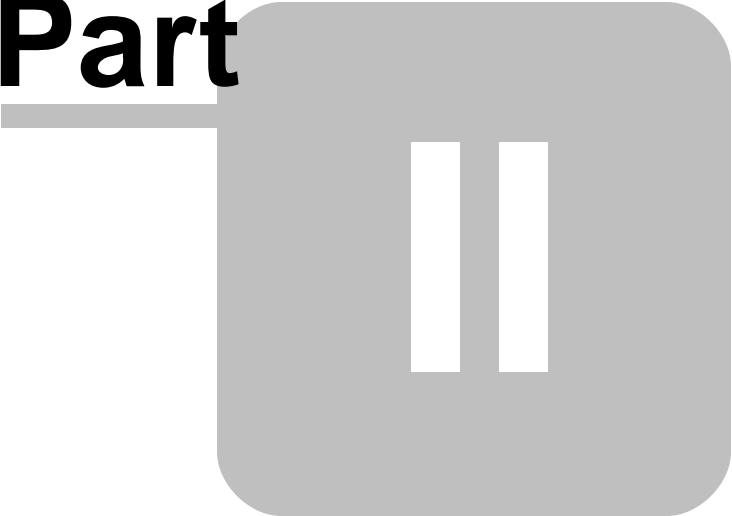
After entering text, the cue banner disappears.



The PROPERTY command can also be used to specify the cue banner.

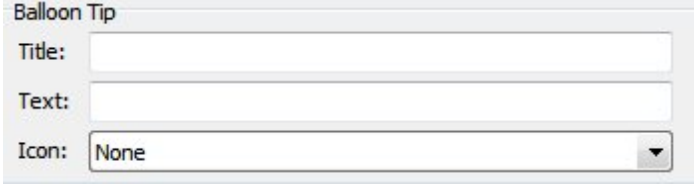
```
PROPERTY DBUserName CUEBANNER 'Enter User Name'  
PROPERTY DB_Password CUEBANNER 'Enter Password'
```

**Part**



## 2 Balloon Tip Hint in DB/Variable Edit Fields

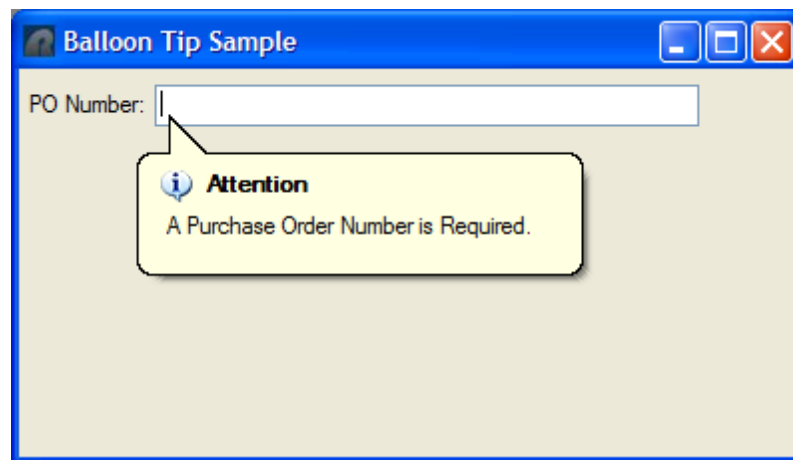
The balloon tip is a hint-type of notification that is used to display a message to an end user running a form. The balloon tip is usually displayed as a response to an action made by the user. The balloon tip can be used with DB Edit and Variable Edit controls, and the settings are available on the "Additional" tab of the object properties. A title, message, and icon image can be displayed in the balloon tip.

|  |   |
|--|---|
| <p>⇒ <b>Balloon Tip</b></p> <p><i>Title</i><br/>Specifies the tip title. The maximum length for the balloon tip title is 99 characters.</p> <p><i>Text</i><br/>Specifies the tip text</p> <p><i>Icon</i><br/>Specifies the icon displayed in the tip. Icon options available include:</p> <ul style="list-style-type: none"><li>• None</li><li>• Info</li><li>• Warning</li><li>• Error</li><li>• Info Large *</li><li>• Warning Large *</li><li>• Error Large *</li></ul> |  <p>* (Windows Vista, 7, and higher only)</p> |
|--|---|

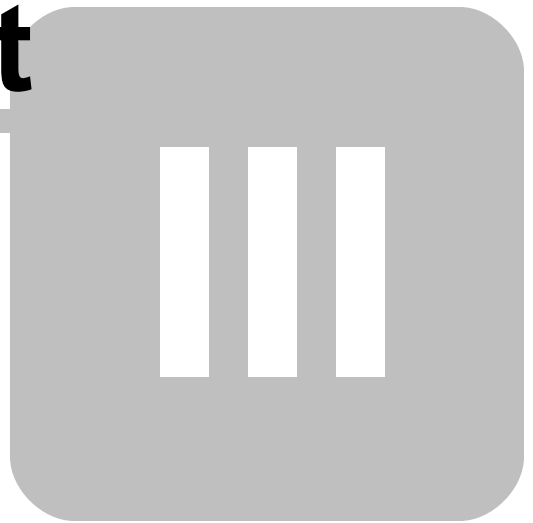
The balloon tip will only appear when the SHOWBALLOONTIP parameter is set to TRUE for the DB Edit or Variable Edit control's Component ID.

**Sample:**

```
PROPERTY PEdit_PO BalloonTipTitle 'Attention'  
PROPERTY PEdit_PO BalloonTipText 'A Purchase Order Number is Required.'  
PROPERTY PEdit_PO BalloonTipIcon Info  
  
IF cPurchaseOrder IS NULL THEN  
    PROPERTY PEdit_PO ShowBalloonTip TRUE  
ELSE  
    PROPERTY PEdit_PO ShowBalloonTip FALSE  
ENDIF
```



**Part**



## 3 Feedback

### **Suggestions and Enhancement Requests:**

From time to time, everyone comes up with an idea for something they'd like their software to do differently.

If you come across an idea that you think might make a nice enhancement, your input is always welcome.

Please submit your suggestion and/or enhancement request to the R:BASE Developers' Corner Crew (R:DCC) and describe what you think might make a nice enhancement. In R:BASE, the R:DCC Client is fully integrated to communicate with the R:BASE development team. From the main Menu Bar, choose "Help" > "RBG9 R:DCC Client". If you do not have a login profile, select "New User" to create one.

If you have a sample you wish to provide, have the files prepared within a zip archive prior to initiating the request. You will be prompted to upload any attachments during the submission process.

Unless additional information is needed, you will not receive a direct response. You can periodically check the status of your submitted enhancement request.

If you are experiencing any difficulties with the R:DCC Client, please send an e-mail to [rbg9rdcc@rbase.com](mailto:rbg9rdcc@rbase.com).

### **Reporting Bugs:**

If you experience something you think might be a bug, please report it to the R:BASE eXtreme Developers' Corner Crew. In R:BASE, the R:DCC Client is fully integrated to communicate with the R:BASE development team. From the main Menu Bar, choose "Help" > "RBG9 R:DCC Client". If you do not have a login profile, select "New User" to create one.

You will need to describe:

- What you did, what happened, and what you expected to happen
- The product version and build
- Any error messages displayed
- What computer operating system is in use
- Anything else you think might be relevant

If you have a sample you wish to provide, have the files prepared within a zip archive prior to initiating the bug report. You will be prompted to upload any attachments during the submission process.

Unless additional information is needed, you will not receive a direct response. You can periodically check the status of your submitted bug.

If you are experiencing any difficulties with the R:DCC Client, please send an e-mail to [rbg9rdcc@rbase.com](mailto:rbg9rdcc@rbase.com).

**Part**



## 4 Useful Resources

- . R:BASE Home Page: <http://www.rbase.com>
- . R:BASE eXtreme Home Page: <http://www.rbaseextreme.com>
- . Up-to-Date R:BASE Updates: <http://www.rupdates.com>
- . Sample Applications: <http://www.rbasecommunity.com>
- . General R:BASE Syntax: <http://www.rsyntax.com>
- . Technical Documents - From The Edge: <http://www.razzak.com/fte>
- . More Sample Applications: <http://www.razzak.com/sampleapplications>
- . Education and Training: <http://www.rbaseuniversity.com>
- . Upcoming Events: <http://www.rbase.com/events>
- . R:BASE Beginners Tutorial: <http://www.rtutorial.com>

# Index

## - B -

BalloonTipIcon 6  
BalloonTipText 6  
BalloonTipTitle 6

## - C -

CUEBANNER 2

## - D -

DB Edit 2, 6

## - F -

feedback 9

## - P -

PROPERTY 2, 6

## - R -

resources 11

## - S -

SHOWBALLOONTIP 6

## - V -

Variable Edit 2, 6

## Notes