

R:BASE eXtreme 9.5



Quick Installation Guide

R:BASE Technologies, Inc.



R:BASE eXtreme 9.5

Quick Installation Guide

by R:BASE Technologies, Inc.

Welcome to R:BASE eXtreme 9.5!

R:BASE eXtreme 9.5 for Windows is a new relational database development environment that has been amplified to provide the latest menu-driven features to database professionals. With the R:BASE engine established as the foundation of stability, the program interface and designers have been enhanced to fully exhibit the highest quality of development usability.

The "eXtreme" in the product's name signifies the cutting-edge development interface incorporated into the R:BASE program making database and application development more productive.

R:BASE eXtreme 9.5 Quick Installation Guide

Copyright © 1982-2014 R:BASE Technologies, Inc.

Information in this document, including URL and other Internet web site references, is subject to change without notice. The example companies, individuals, products, organizations and events depicted herein are completely fictitious. Any similarity to a company, individual, product, organization or event is completely unintentional. R:BASE Technologies, Inc. shall not be liable for errors contained herein or for incidental consequential damages in connection with the furnishing, performance, or use of this material. This document contains proprietary information, which is protected by copyright. Complying with all applicable copyright laws is the responsibility of the user. Without limiting the rights under copyright, no part of this document may be reproduced, stored in or introduced into a retrieval system, or transmitted in any form or by any means (electronic, mechanical, photocopying, recording, or otherwise), or for any purpose, without the express written consent of R:BASE Technologies, Inc. We reserve the right to make changes from time to time in the contents hereof without obligation to notify any person of such revision or changes. We also reserve the right to change the specification without notice and may therefore not coincide with the contents of this document. The manufacturer assumes no responsibilities with regard to the performance or use of third party products.

Products that are referred to in this document may be either trademarks and/or registered trademarks of the respective owners. The publisher and the author make no claim to these trademarks.

The software described in this document is furnished under a license agreement. The software may be used or copied only in accordance with the terms of that agreement. Any unauthorized use or duplication of the software is forbidden.

R:BASE Technologies, Inc. may have patents, patent applications, trademarks, copyrights, or other intellectual property rights covering subject matter in this document. Except as expressly provided in any written license agreement from R:BASE Technologies, Inc., the furnishing of this document does not give you any license to these patents, trademarks, copyrights, or other intellectual property.

Trademarks

R:BASE®, Oterro®, R:BASE C/S:![®], R:Admin®, R:Scope®, R:WEB Suite®, R:Mail®, R:Charts®, R:Spell Checker®, R:Docs®, R:BASE Editor®, R:Scheduler®, R:BASE Plugin Power Pack®, R:Style®, R:Code®, R:Struc®, R:Zip®, R:Fax®, R:QBDataDirect®, R:QBSynchronizer®, R:QBDBExtractor®, R:Mail Editor®, R:Linux®, R:BASE Dependency Viewer®, R:Archive®, R:Chat®, R:DCC Client®, R:Mail Editor®, R:Code®, R:Column Analyzer®, R:DF Form Filler®, R:FTPClient®, R:SFTPClient®, R:Map®, R:GeoCoder®, R:PDF Form Filler®, R:PDFWorks®, R:PDFMerge®, R:PDFSearch®, R:Installer®, R:Updater®, R:Capture®, R:RemoteControl®, R:Synchronizer®, R:Biometric®, R:CAD Viewer®, R:Twain2PDF®, R:Tango®, R:SureShip®, R:BASE Total Backup®, R:Scribbler®, R:SmartSig®, R:JobTrack®, R:TimeTrack®, R:Syntax®, R:WatchDog®, R:Manufacturing®, R:Merge®, R:Documenter®, R:Magellan®, R:WEB Reports®, R:WEB Gateway®, R:ReadyRoute®, R:Accounting®, R:Contact®, R:DWF Viewer®, R:Java®, R:PHP® and Pocket R:BASE® are trademarks or registered trademarks of R:BASE Technologies, Inc. All Rights Reserved. All other brand, product names, company names and logos are trademarks or registered trademarks of their respective companies.

Windows, Windows 8, Windows 7, Vista, Windows Server 2003-2012, XP, and Windows 2000 are registered trademarks of Microsoft Corporation.

Printed: January 2014 in Murrysville, PA

First Edition

Table of Contents

Part I R:BASE eXtreme 9.5 Quick Installation Guide	2
1 System Requirements	2
2 Things You Will Need	2
3 Setup Initialization	3
Welcome	3
License	4
Readme Information	5
Components	5
User Information	7
Destination Folder	8
Installation Progress	8
Process Completed	10
4 Starting R:BASE for the First Time	10
Part II Product Updates	14
Part III Technical Support	16
Part IV Feedback	18
Part V Useful Resources	20
Index	21

Part



1 R:BASE eXtreme 9.5 Quick Installation Guide

1.1 System Requirements

The following system configurations are recommended for the optimal use of R:BASE and R:BASE-related software.

Hardware

- CPU with Intel Pentium 4, Pentium M, Core or Atom, AMD Athlon 64 or later
- 2 GB of available RAM (4 GB recommended)
- 2 GB of available hard disk space
- 1024x768 or higher resolution video adapter and display
- Standard mouse or compatible pointing device
- Standard keyboard
- CD-ROM Drive (installation only)

Operating System

- Microsoft Windows 8 (Professional)
- Microsoft Windows 7
- Microsoft Windows Vista (SP2)
- Microsoft Windows XP (SP3)
- Microsoft Windows Server 2012
- Microsoft Windows Server 2008
- Microsoft Windows Server 2003

Network

- All Windows-compatible networks

1.2 Things You Will Need

- License Key

Before launching the installer, it is recommended that you have your R:BASE eXtreme 32-character License Key readily available. The License Key is located on a label with the installation CD on the inside of the protective product case. If you acquired the installer by download, the License Key would have been provided in an email message. If you have lost or misplaced your License Key, please contact our Support Staff by email at support@rbase.com or call our office between 10:00am and 6:00pm EST at 1+724-733-0053.

- Internet Access

The computer where R:BASE eXtreme 9.5 will be launched should have access to the Internet when you first start the R:BASE. The Internet access is used to visit the R:BASE Technologies to provide you with your required Activation Key.

In instances where R:BASE will be installed on a computer that is not connected to the Internet, you must then contact R:BASE Technologies by phone or email to provide information displayed on the computer screen. In this case, please contact our Product Activation Staff by email at activationkey@rbase.com or call our office between 10:00am and 6:00pm EST at 1+724-733-0053. When you call, you will need to have your R:BASE Registration Number available. The Registration Number is provided on your invoice/packing slip, or within the email for those who have downloaded the product.

1.3 Setup Initialization

Make sure to log into the computer as the Administrator when installing R:BASE. Otherwise, you will not be able to install the software properly.

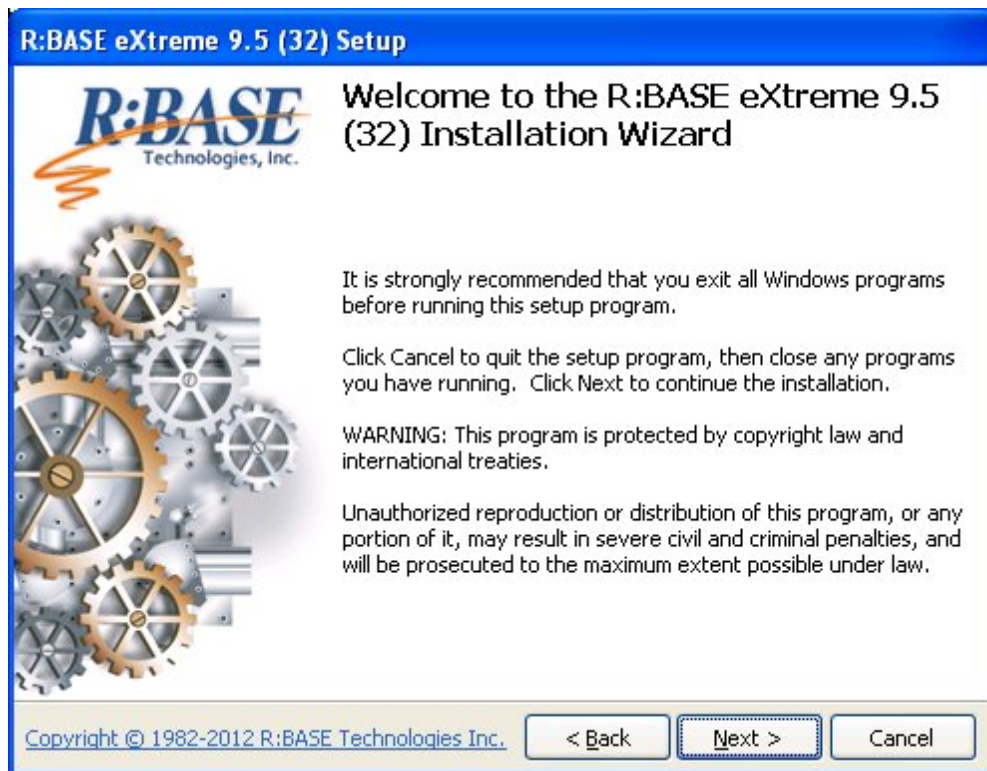
Begin by inserting the installation CD into your CD-ROM drive. Normally, the setup process begins automatically. However, if it does not, go to Start > Run and type "D:\Setup.exe" where D: is the drive letter of your CD-ROM or DVD drive that contains the installation CD. Also, do not include the quote characters (""). If a product download was provided, run the Setup executable file to begin the installation process.

During the initialization process, it is possible that you may be required to reboot your machine before the actual R:BASE installation can proceed. This is a normal part of the initialization if your machine does not have the latest Windows MSI interface installed. The R:BASE installer will update the Windows MSI interface automatically and require you to reboot before continuing.

After your machine restarts, the installation should resume automatically. If it does not, go to Start> Run and type "D:\Setup.exe" where D: is the drive letter of your CD-ROM drive that contains the installation CD. Do not include the quote characters ("").

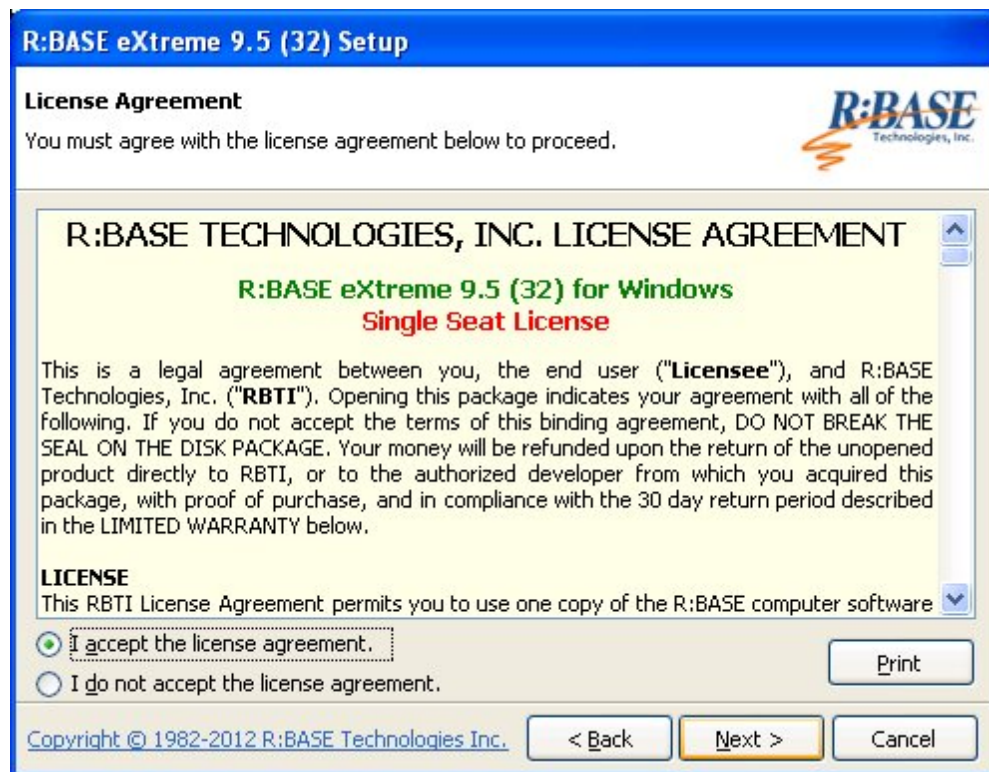
1.3.1 Welcome

The R:BASE eXtreme for Windows setup was designed to make the process as simple and efficient as possible. After the initialization process, you will be presented with the Welcome screen.



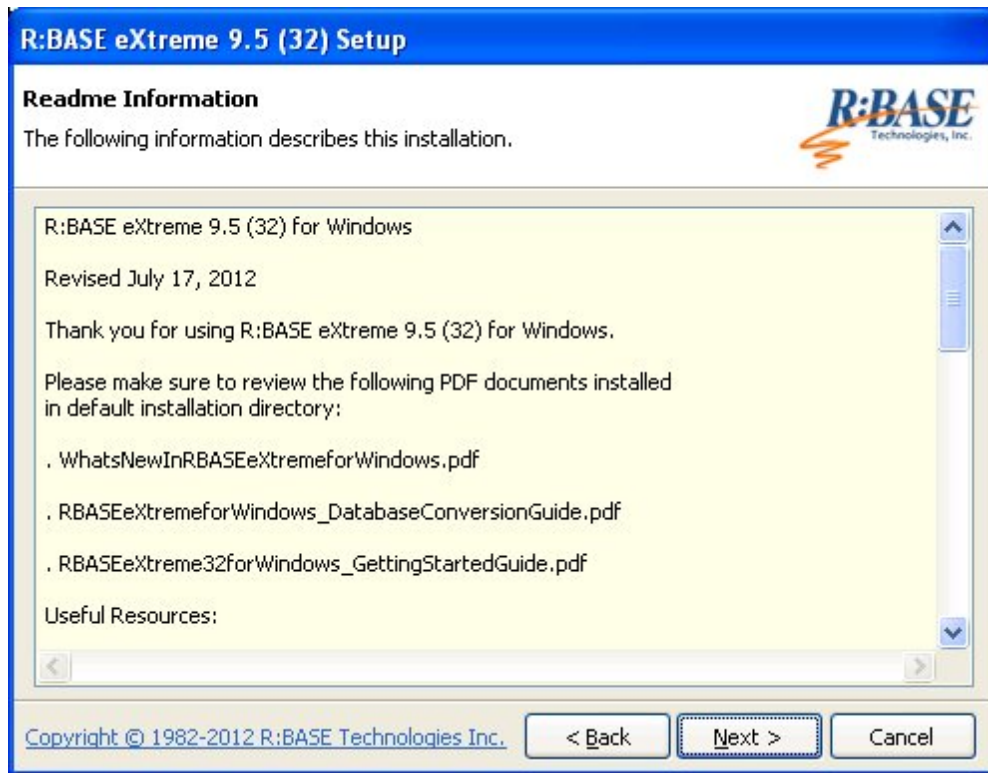
Click "Next" to this screen, you will be advance to the License screen.

1.3.2 License



Before you will be allowed to continue, you must agree to the license by clicking the "I accept the license agreement" radio button. Only then will you be able to press the "Next" button to continue.

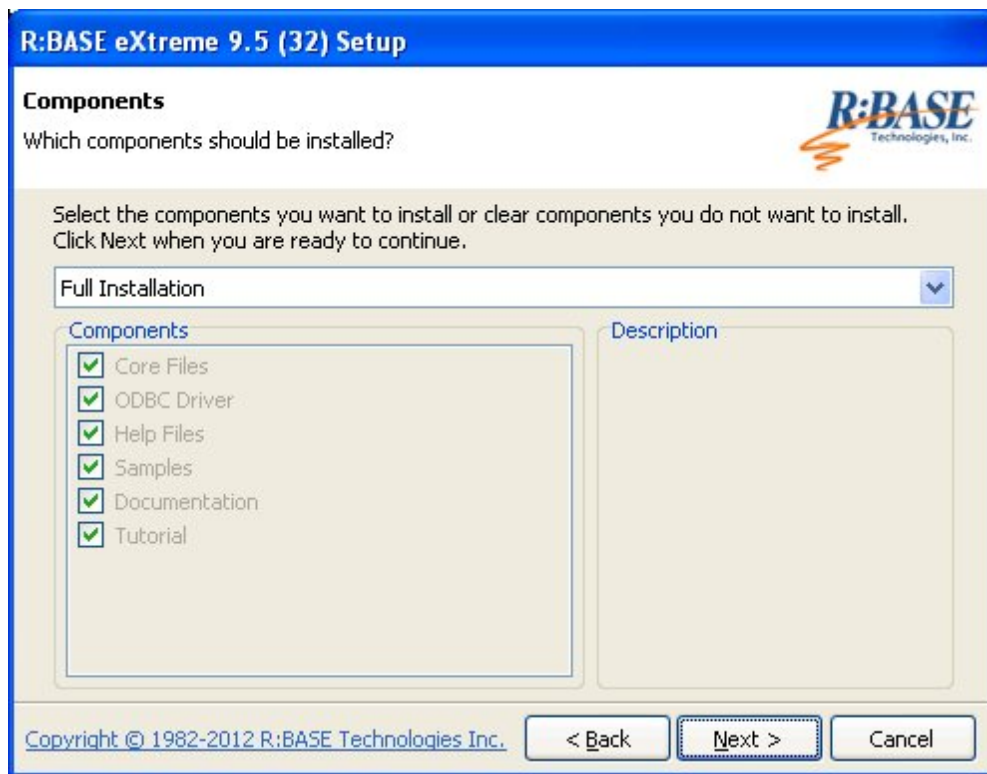
1.3.3 Readme Information



Press the "Next" button to continue after reading the information.

1.3.4 Components

The Components screen allows for four different installation methods for R:BASE; **Full**, **Compact**, **Custom** and **Server**.



Components	Full	Compact	Custom	Server
Core Files	Yes	Yes	Yes	Yes
ODBC	Yes	No	Optional	Yes
Help Files (CHM)	Yes	Yes	Optional	Yes
Documentation (PDF)	Yes	No	Optional	Yes
Samples	Yes	No	Optional	Yes
Tutorial	Yes	No	Optional	Yes
R:BASE Editor Schemes	All	R:BASE Only	All	All

Client Installation

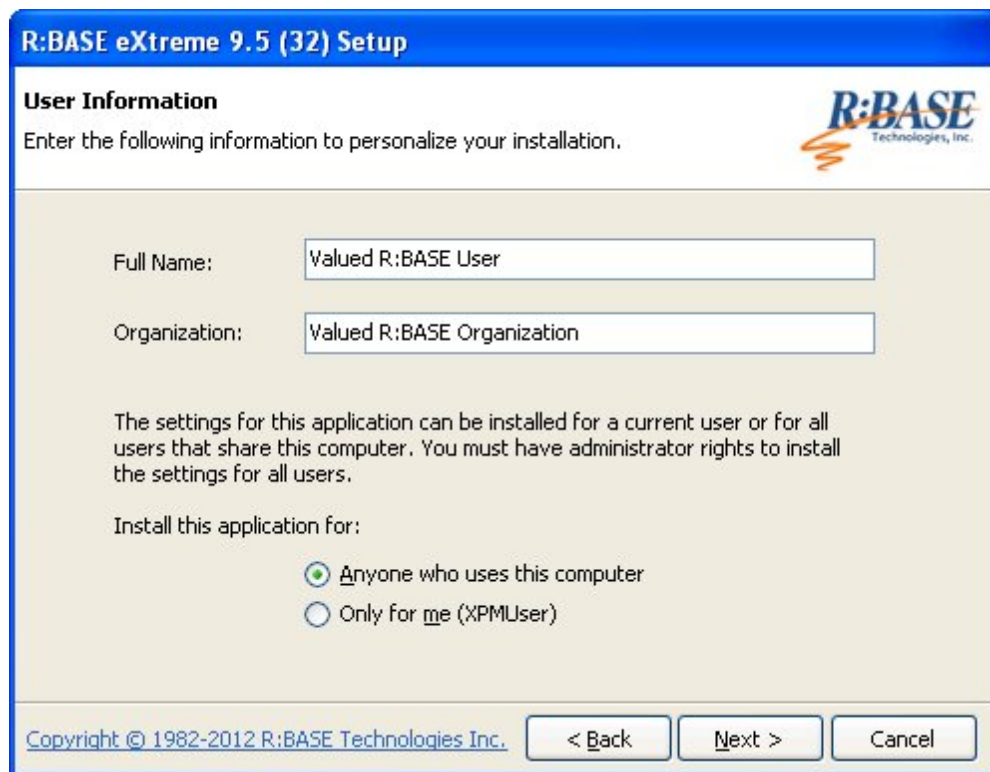
The Full, Compact, and Custom installation options are for users that want R:BASE installed upon the client workstation. These methods will load the executables into the program directory and the engine files into the system directory.

Server Installation

When choosing the Server Installation, all files are installed into the selected [Destination Folder](#). The Server Installation is the typical installation choice for network administrators and developers that want R:BASE installed upon a centralized location within a local area network.

It is beneficial to use this method when there are a great number of users which will be launching the R:BASE software. Another benefit is that when applying R:BASE updates, there is only one installation to be updated, other than updating every workstation individually.

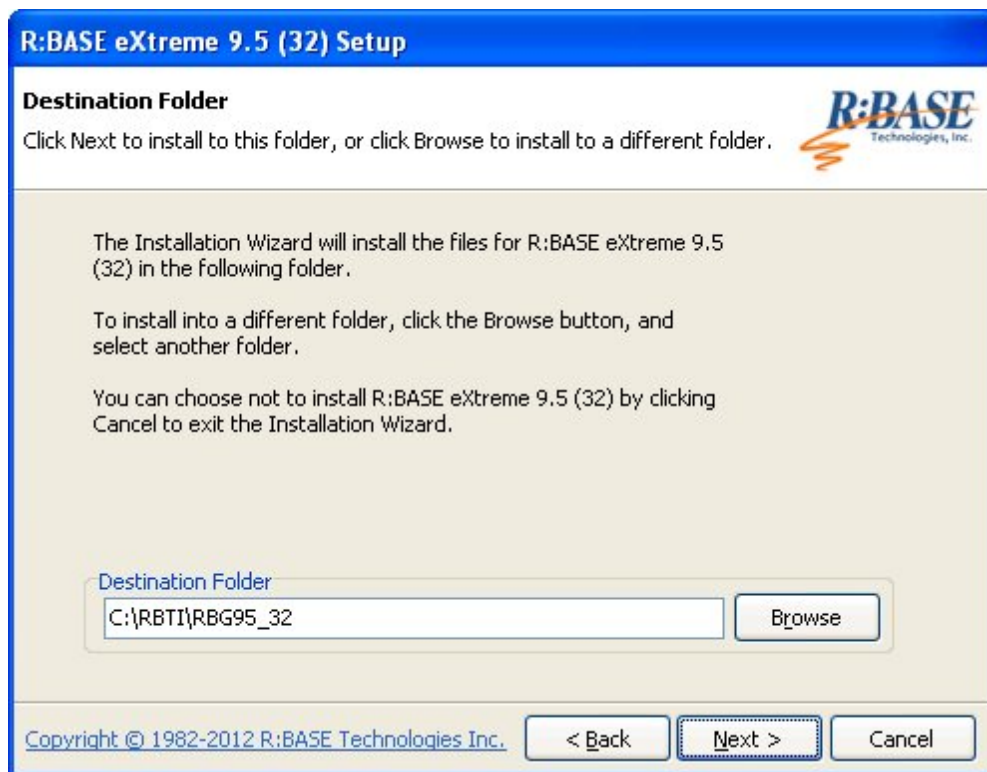
1.3.5 User Information



The screenshot shows a Windows-style dialog box titled "R:BASE eXtreme 9.5 (32) Setup". The main heading is "User Information" with a sub-instruction: "Enter the following information to personalize your installation." The R:BASE Technologies, Inc. logo is in the top right. There are two text input fields: "Full Name:" containing "Valued R:BASE User" and "Organization:" containing "Valued R:BASE Organization". Below these is a paragraph of text: "The settings for this application can be installed for a current user or for all users that share this computer. You must have administrator rights to install the settings for all users." Underneath is the label "Install this application for:" followed by two radio buttons. The first is selected and labeled "Anyone who uses this computer". The second is unselected and labeled "Only for me (XPMUser)". At the bottom left is the copyright notice "Copyright © 1982-2012 R:BASE Technologies, Inc.". At the bottom right are three buttons: "< Back", "Next >", and "Cancel".

The User Information screen allows you to enter personal information for the installation. You can also choose between installing the program for "Anyone who uses this computer" that may log onto the machine, or just for yourself. This option determines whether desktop and program shortcuts are provided just yourself, or all who use the computer. Select the appropriate radio button after entering your information and press "Next" to continue.

1.3.6 Destination Folder



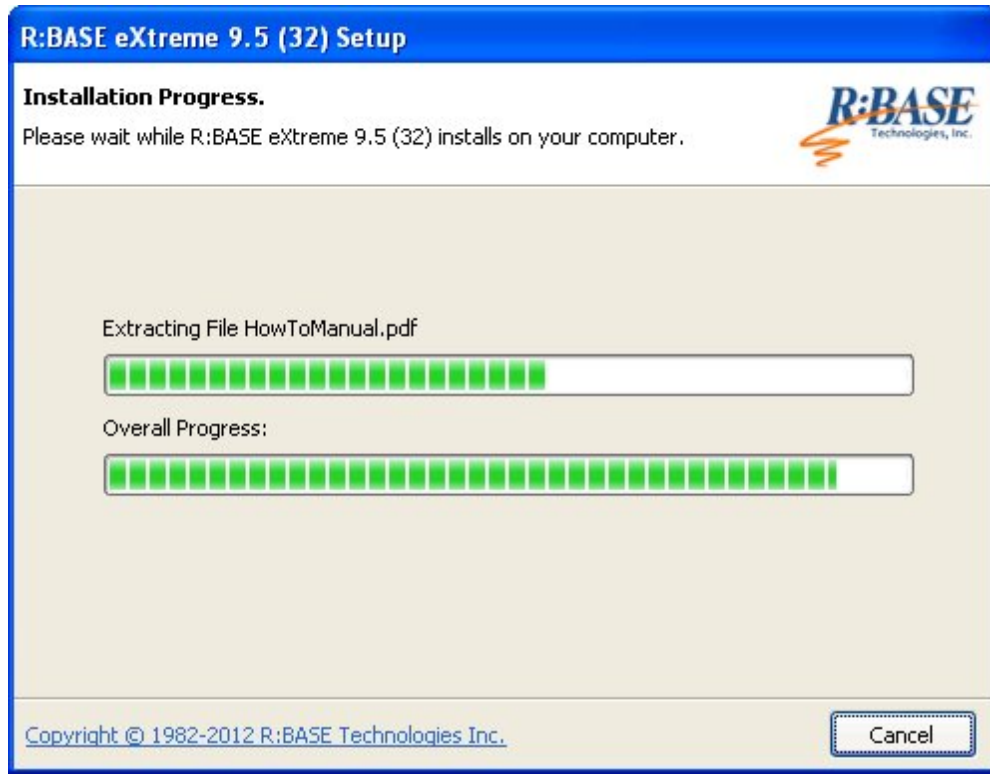
The Destination Folder screen allows you to tell the installer where you would like the program to be installed.

Simply click the "Browse" button to navigate to your desired location. The installer will create the directory you choose if it does not already exist. The program will be installed in a subdirectory of your chosen location.

When finished, press "Next" to continue.

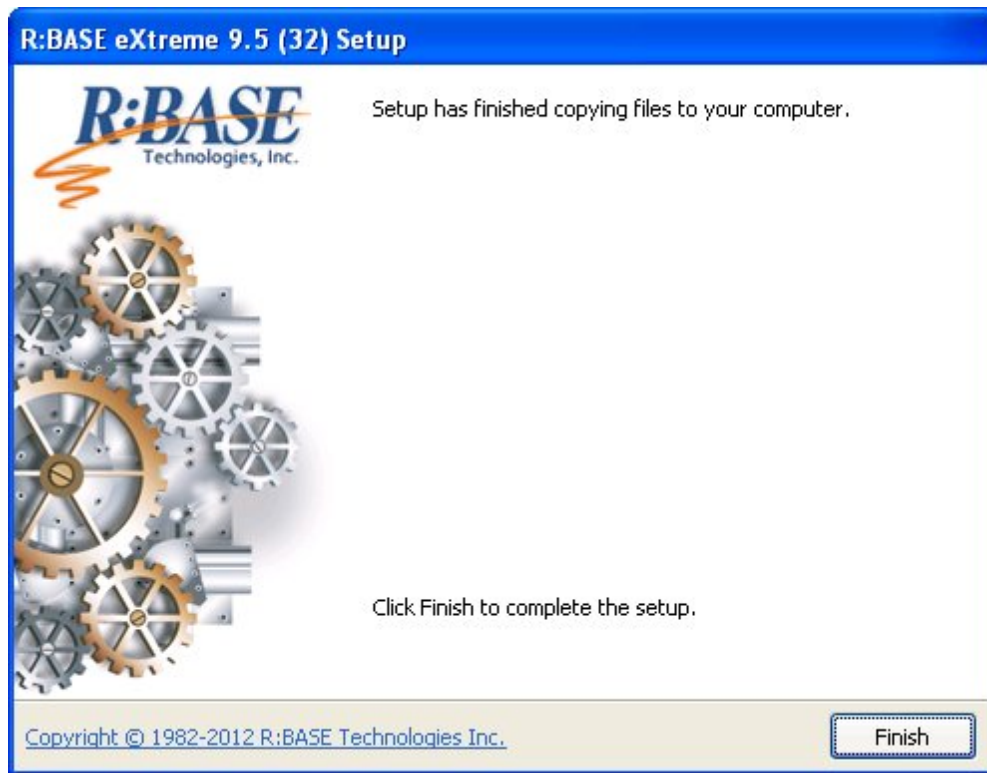
1.3.7 Installation Progress

The installation process will show you the status of the installation. If any errors occur, they will display during this process.



Sit back and relax while the program does its work!

1.3.8 Process Completed



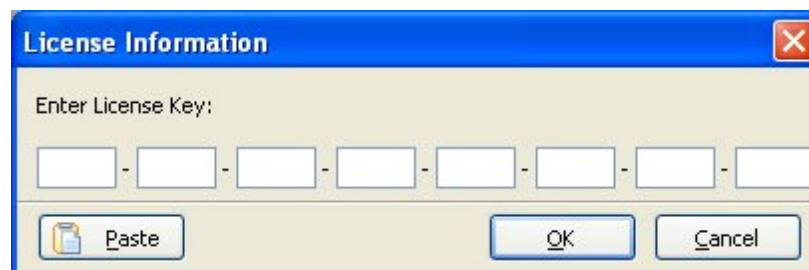
When you receive this screen, the installation process has successfully completed.

Press "Finish" to finalize the installation and begin using R:BASE eXtreme 9.5!

1.4 Starting R:BASE for the First Time

When starting R:BASE eXtreme 9.5 for Windows for the first time, you will be prompted for your product License Key, followed by the activation process.

After launching R:BASE, you will be prompted to enter your 32-character License Key, which is provided with your product and is located on a label above the installation CD on the inside of the protective product case.



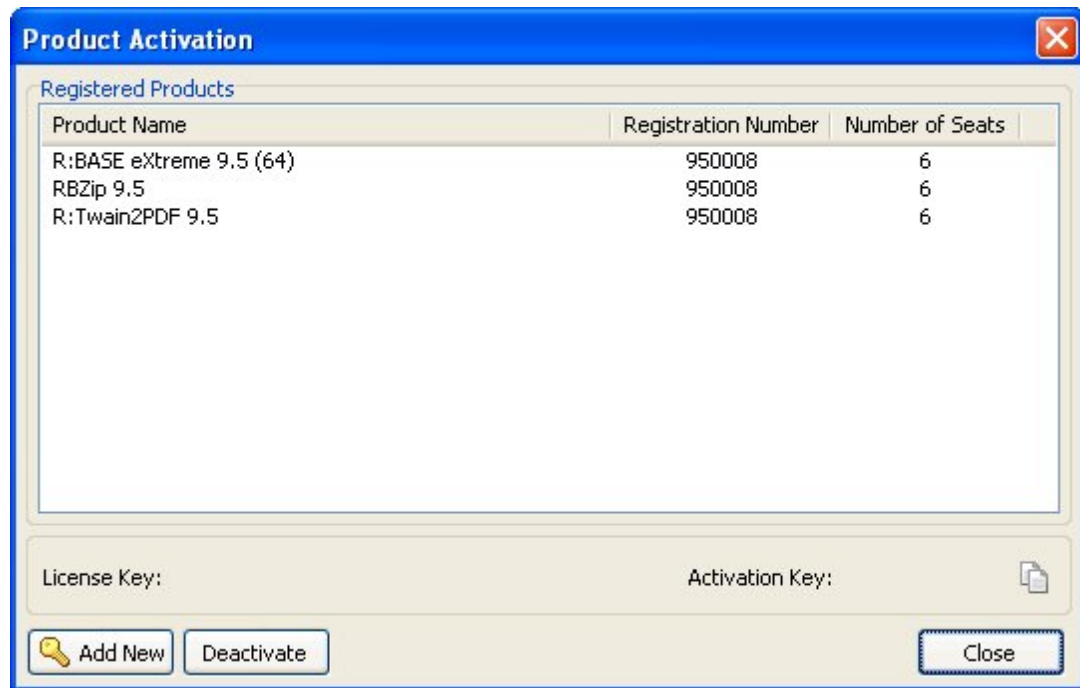
After entering the License Key, you will see a dialog to prompt for your activation method. The software can be activated automatically over the Internet, or manually by retrieving an Activation Key from R:BASE Technologies by email or over the phone. If you select "Later", you will be reminded each time R:BASE starts to activate your copy.



When activating the software manually, you select the e-mail link to launch your email client and send a preformatted message to R:BASE Technologies that will contain your License Key and the displayed Computer ID. Or, you can call our office between 10:00am and 6:00pm EST at +1 (724) 733-0053. You will need to provide your R:BASE Registration Number and Computer ID.

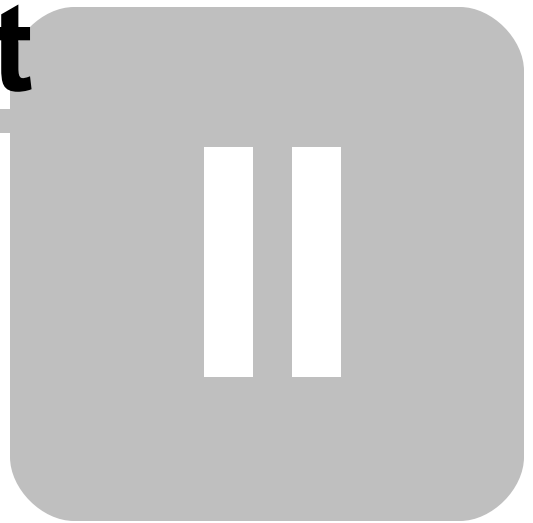


At any time, you can review your product information by starting R:BASE eXtreme 9.5, and from the Menu Bar clicking on "Help" > "Product Activation". Your R:BASE Registration Number is displayed on the window. You can also enter additional License Keys for R:BASE add-on products.



Please be advised that if you are activating multiple workstations, it is highly recommended that you keep records of the computer name, Computer ID and Activation Key for future reference. Access to this information will prove convenient in the event of a hardware failure or license transfer when uninstalling R:BASE.

Part



2 Product Updates

Be sure you have applied the latest updates for R:BASE after the installation. Product updates are available at <http://www.rupdates.com>. Product updates are available to all current users who have purchased the product within one year or have subscribed to an R:BASE Software Assurance Plan (R:SAP)

R:BASE product updates are cumulative. You are only required to apply the latest update in order to update the program. All intermittent updates do not need to be applied. After downloading and launching an update, the "Client" and "Server" update options are available:

Client Installation

Before installing R:BASE updates on client workstations, you must close the R:BASE program!

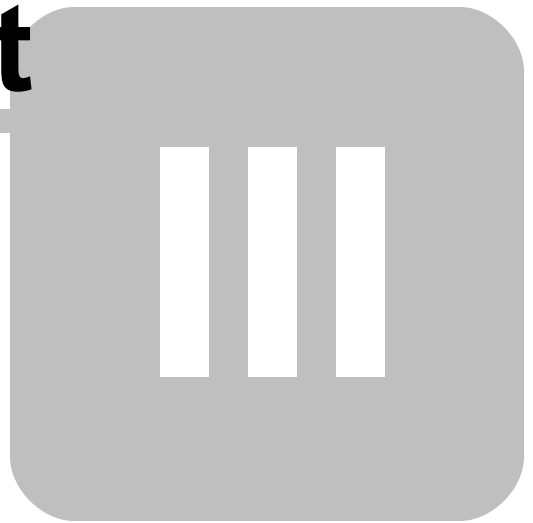
When applying updates for client installations you will use the "Typical Update" button. This will place R:BASE program DLLs into the system directory and R:BASE program executable and associated updates into the R:BASE program direct (default: C:\RBTI\RBG95_32 or C:\RBTI\RBG95_64). If you have altered the default installation path, you must use the "Browse" button to change the update destination for the R:BASE program files.

Server Installation

Before installing R:BASE updates on a server installation, you must make sure all client workstations close the R:BASE program!

When applying updates on the server, you will use the "Server Update" button. This will place R:BASE program DLLs, program executable, and associated updates into a single directory. You must use the "Browse" button to change the update destination for all of the R:BASE files.

Part



3 Technical Support

Please read over this inline HELP documentation at least once before seeking support for this product. We have worked very hard to make this help file clear and useful, but concise. There's a lot of power here so we suggest you reread these instructions once you have become accustomed to using R:BASE. New uses will become apparent.

If you have further question(s) about R:BASE, and can't find the answer(s) in this help documentation, you can obtain information from a variety of sources:

- E-mail our Technical Support Department at: support@rbase.com
- Access the R:BASE Technologies Support Home Page on the World Wide Web at <http://www.rbase.com/support>.
- Call our Technical Support Department at (724) 733-0053 Monday through Friday, 10:00 AM to 6:00 PM (EST). You should be at your computer with R:BASE running and ready to make changes suggested by our technical staff. You may be required to purchase a technical support plan. Several support plans are available to suit the needs of all users. [Available Technical Support Plans](#)

Please be prepared to refer to the following:

- The technical support registration number, which is located on the registration card included with this product. If you purchased this product directly from R:BASE Technologies, your technical support registration number can be found on your invoice or packing sheet.
- The type of hardware and operating system you are using.
- Details regarding your operating environment, such as available memory, disk space, your version of R:BASE, local area network, special drivers, related database structures, application files, and other files that are used or accessed by your application.

All of the information that you provide us is used to better and more expeditiously assist you.

R:BASE Technologies has a number of different services available for R:BASE products. As a registered user, you will receive information about new releases of R:BASE and other R:BASE Technologies products. Please remember to register your R:BASE software as well as any other R:BASE related software. <http://www.rbase.com/register/>

Part



4 Feedback

Suggestions and Enhancement Requests:

From time to time, everyone comes up with an idea for something they'd like their software to do differently.

If you come across an idea that you think might make a nice enhancement, your input is always welcome.

Please submit your suggestion and/or enhancement request to the R:BASE Developers' Corner Crew (R:DCC) and describe what you think might make a nice enhancement. In R:BASE, the R:DCC Client is fully integrated to communicate with the R:BASE development team. From the main Menu Bar, choose "Help" > "RBG9 R:DCC Client". If you do not have a login profile, select "New User" to create one.

If you have a sample you wish to provide, have the files prepared within a zip archive prior to initiating the request. You will be prompted to upload any attachments during the submission process.

Unless additional information is needed, you will not receive a direct response. You can periodically check the status of your submitted enhancement request.

If you are experiencing any difficulties with the R:DCC Client, please send an e-mail to rbg9rdcc@rbase.com.

Reporting Bugs:

If you experience something you think might be a bug, please report it to the R:BASE eXtreme Developers' Corner Crew. In R:BASE, the R:DCC Client is fully integrated to communicate with the R:BASE development team. From the main Menu Bar, choose "Help" > "RBG9 R:DCC Client". If you do not have a login profile, select "New User" to create one.

You will need to describe:

- What you did, what happened, and what you expected to happen
- The product version and build
- Any error messages displayed
- What computer operating system is in use
- Anything else you think might be relevant

If you have a sample you wish to provide, have the files prepared within a zip archive prior to initiating the bug report. You will be prompted to upload any attachments during the submission process.

Unless additional information is needed, you will not receive a direct response. You can periodically check the status of your submitted bug.

If you are experiencing any difficulties with the R:DCC Client, please send an e-mail to rbg9rdcc@rbase.com.

Part



5 Useful Resources

- . R:BASE Home Page: <http://www.rbase.com>
- . R:BASE eXtreme Home Page: <http://www.rbaseextreme.com>
- . Up-to-Date R:BASE Updates: <http://www.rupdates.com>
- . Sample Applications: <http://www.rbasecommunity.com>
- . General R:BASE Syntax: <http://www.rsyntax.com>
- . Technical Documents - From The Edge: <http://www.razzak.com/fte>
- . More Sample Applications: <http://www.razzak.com/sampleapplications>
- . Education and Training: <http://www.rbaseuniversity.com>
- . Upcoming Events: <http://www.rbase.com/events>
- . R:BASE Beginners Tutorial: <http://www.rtutorial.com>

Index

- A -

activate 2
Activation Key 10
administrator 2

- C -

Client 5
Client Installation 14
Compact 5
Components 5
Custom 5

- D -

destination folder 8

- F -

feedback 18
Full 5

- I -

Installation 5

- K -

key, activation 2
key, license 2

- L -

license 2, 4
License Key 10

- P -

permission 2
product updates 14

- R -

Readme 5
registration number 2
resources 20

- S -

Server 5
Server Installation 14
Server Update 14
setup 3
support 2, 16
system requirements 2

- T -

Typical Update 14

- U -

UAC 2
update, client 14
update, server 14
updates 14
User Access Control 2

Notes