

All About The PAUSE Command





R:BASE eXtreme 9.1 for Windows

All About The PAUSE Command

by R:BASE Technologies, Inc.

All About The PAUSE Command

Copyright © 1982-2011 R:BASE Technologies, Inc. All rights reserved.

Information in this document, including URL and other Internet web site references, is subject to change without notice. The example companies, individuals, products, organizations and events depicted herein are completely fictitious. Any similarity to a company, individual, product, organization or event is completely unintentional. R:BASE Technologies, Inc. shall not be liable for errors contained herein or for incidental consequential damages in connection with the furnishing, performance, or use of this material. This document contains proprietary information, which is protected by copyright. Complying with all applicable copyright laws is the responsibility of the user. Without limiting the rights under copyright, no part of this document may be reproduced, stored in or introduced into a retrieval system, or transmitted in any form or by any means (electronic, mechanical, photocopying, recording, or otherwise), or for any purpose, without the express written consent of R:BASE Technologies, Inc. We reserve the right to make changes from time to time in the contents hereof without obligation to notify any person of such revision or changes. We also reserve the right to change the specification without notice and may therefore not coincide with the contents of this document. The manufacturer assumes no responsibilities with regard to the performance or use of third party products.

Products that are referred to in this document may be either trademarks and/or registered trademarks of the respective owners. The publisher and the author make no claim to these trademarks.

The software described in this document is furnished under a license agreement. The software may be used or copied only in accordance with the terms of that agreement. Any unauthorized use or duplication of the software is forbidden.

R:BASE Technologies, Inc. may have patents, patent applications, trademarks, copyrights, or other intellectual property rights covering subject matter in this document. Except as expressly provided in any written license agreement from R:BASE Technologies, Inc., the furnishing of this document does not give you any license to these patents, trademarks, copyrights, or other intellectual property.

Trademarks

R:BASE®, Oterro®, R:BASE C/S:I®, RBAAdmin®, R:Scope®, R:WEB Suite®, R:Mail®, R:Charts®, R:Spell Checker®, R:Docs®, R:BASE Editor®, R:Scheduler®, R:BASE Plugin Power Pack®, R:Style®, R:Code®, R:Struc®, RBZip®, R:Fax®, R:QBDataDirect®, R:QBSynchronizer®, R:QBDBExtractor®, R:Mail Editor®, R:Linux®, R:Archive®, R:Chat®, RDCC Client®, R:Mail Editor®, R:Code®, R:Column Analyzer®, R:DF Form Filler®, R:FTPClient®, R:SFTPClient®, R:PDF Form Filler®, R:PDFWorks®, R:PDFMerge®, R:PDFSearch®, RBInstaller®, RBUpdater®, R:Capture®, R:RemoteControl®, R:Synchronizer®, R:Biometric®, R:CAD Viewer®, R:Twain2PDF®, R:Tango®, R:SureShip®, R:BASE Total Backup®, R:Scribbler®, R:SmartSig®, R:JobTrack®, R:TimeTrack®, R:Syntax®, R:WatchDog®, R:Manufacturing®, R:Merge®, R:Documenter®, R:Magellan®, R:WEB Reports®, R:WEB Gateway®, R:ReadyRoute®, R:Accounting®, R:Contact®, R:DWF Viewer®, R:Java®, R:PHP® and Pocket R:BASE® are trademarks or registered trademarks of R:BASE Technologies, Inc. All Rights Reserved. All other brand, product names, company names and logos are trademarks or registered trademarks of their respective companies.

Windows, Windows 7, Vista, Windows Server 2003-2008, XP, and Windows 2000 are registered trademarks of Microsoft Corporation.

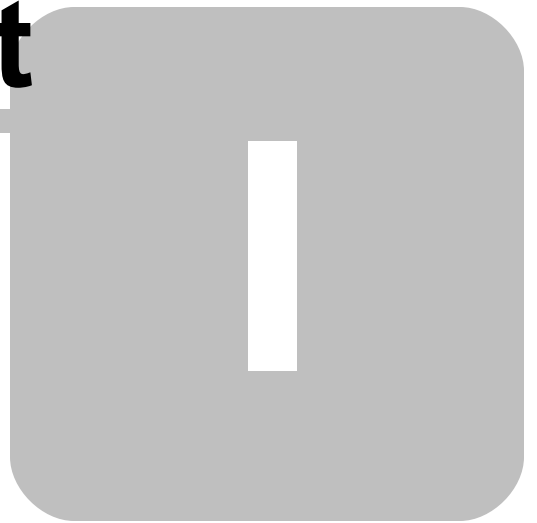
Printed: February 2011 in Murrysville, PA

First Edition

Table of Contents

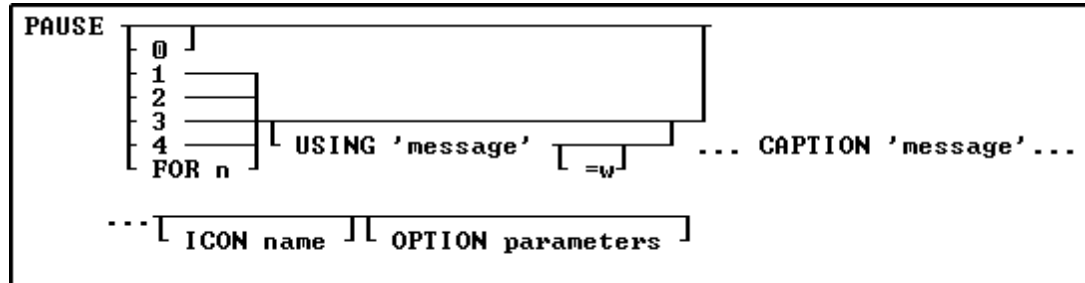
Part I All About The PAUSE Command	2
1 OPTION Parameters	6
Message	7
Meter	9
Gauge Meter	11
Part II Feedback	14
Part III Useful Resources	16

Part



1 All About The PAUSE Command

Use the PAUSE command to suspend the running of the command file.



Options

0

Pauses without a message.

1

Displays "Press OK to continue" or any message using the USING option in a dialog box. The R> Prompt screen then clears with the next keystroke.

2

Same as the 1 option, except the R> Prompt screen does not clear with the next keystroke.

3

Does not pause the running of the command file and therefore does not wait for the next keystroke.

4

If a PAUSE 3 dialog already exists only the message will be repainted to avoid flickering. Otherwise, this is exactly like the PAUSE 3 option.

FOR n

Sets the pause duration in seconds; **n** must be a positive integer. Any keystroke interrupts the pause, regardless of duration. In the absence of a USING clause, no message is displayed. With a USING clause, the message is displayed in a dialog box

USING 'message'

Displays the specified message in a dialog box. This value can also be passed as a variable.

Using this default parameter the maximum width of message text in a Windows dialog box is 77 characters and is limited to one line. However, if you need to display a multi-line PAUSE window, you can create separate lines with the ASCII characters for a carriage return and indent ([Tab] key). A sample is provided below.



=width









Specifies the wrap width for the dialog box message.

CAPTION 'message'

Specifies the text of the message to display in the dialog box caption. The value can also be passed as a variable.

ICON value

Icon "value" Parameter	Icon
APPS	
ATTENTION	

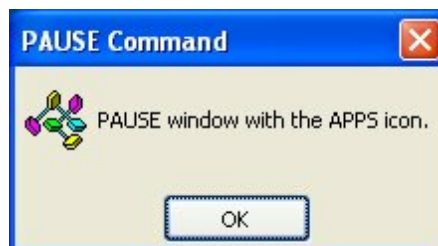
CONFIRM	
ERROR	
HELP	
INFO	
QUESTION	
SERIOUS	
STOP	
WARNING	
WINDOWS	

Additional [OPTION parameters](#)

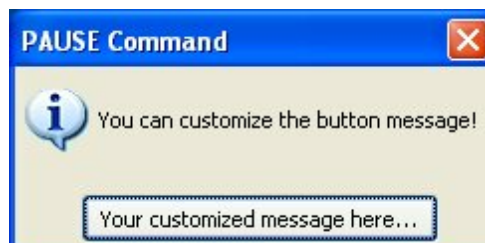
Additional parameters are available to increase the visual display of the PAUSE window. To use the graphic PAUSE Builder, choose "Utilities" > "Plugins" > "Internal Plugins" > "PAUSE Builder" from the main Menu Bar. All OPTION parameters and values must be separated by the "|" (pipe) character.

Examples:

```
PAUSE 2 USING 'PAUSE window with the APPS icon.' CAPTION 'PAUSE Command' ICON APPS
```



```
PAUSE 2 USING 'You can customize the button message!' CAPTION 'PAUSE Command' ICON INFO
INFO BUTTON 'Your customized message here...'
```



-- Standard PAUSE Command with ICON

```
PAUSE 2 USING 'Message Text' +
CAPTION 'Caption Text' +
```

```

ICON HELP OPTION +
BUTTON 'Button Text' +
|BACK_COLOR WHITE +
|MESSAGE_COLOR WHITE +
|MESSAGE_FONT_COLOR GREEN +
|BUTTON_COLOR WHITE +
|BUTTON_FONT_COLOR GREEN +
|TRANSPARENCY 255

```

-- Standard PAUSE Command with custom ICON

```

PAUSE 2 USING 'Message Text' +
CAPTION 'Caption Text' +
BUTTON 'Button Text' +
OPTION ICON_FILE path\directory\filename.bmp +
|BACK_COLOR WHITE +
|MESSAGE_COLOR WHITE +
|MESSAGE_FONT_COLOR GREEN +
|BUTTON_COLOR WHITE +
|BUTTON_FONT_COLOR GREEN +
|TRANSPARENCY 255

```

Note: Custom icon to be used in PAUSE option must be 16x16 pixels BMP file.

-- Multi-Line PAUSE Command

```

-- (CHAR(009)) = Tab Key (Indent)
-- (CHAR(013)) = Carriage Return

```

```

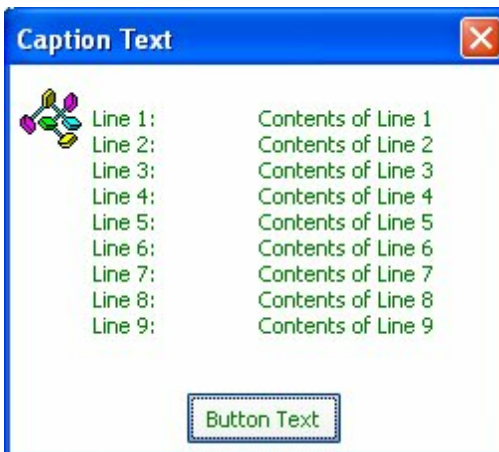
SET VAR vMsg = +
('Line 1:'+(CHAR(009))+(CHAR(009))&'Contents of Line 1'+(CHAR(009))+(CHAR(013)))+ +
'Line 2:'+(CHAR(009))+(CHAR(009))&'Contents of Line 2'+(CHAR(009))+(CHAR(013)))+ +
'Line 3:'+(CHAR(009))+(CHAR(009))&'Contents of Line 3'+(CHAR(009))+(CHAR(013)))+ +
'Line 4:'+(CHAR(009))+(CHAR(009))&'Contents of Line 4'+(CHAR(009))+(CHAR(013)))+ +
'Line 5:'+(CHAR(009))+(CHAR(009))&'Contents of Line 5'+(CHAR(009))+(CHAR(013)))+ +
'Line 6:'+(CHAR(009))+(CHAR(009))&'Contents of Line 6'+(CHAR(009))+(CHAR(013)))+ +
'Line 7:'+(CHAR(009))+(CHAR(009))&'Contents of Line 7'+(CHAR(009))+(CHAR(013)))+ +
'Line 8:'+(CHAR(009))+(CHAR(009))&'Contents of Line 8'+(CHAR(009))+(CHAR(013)))+ +
'Line 9:'+(CHAR(009))+(CHAR(009))&'Contents of Line 9'+(CHAR(009))+(CHAR(013)))

```

```

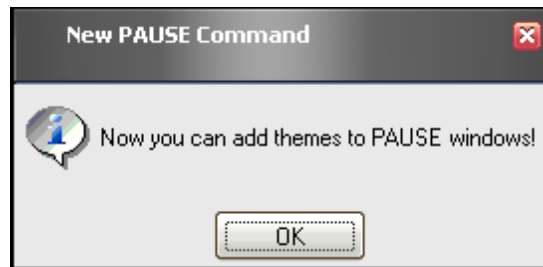
PAUSE 2 USING .vMsg +
CAPTION 'Caption Text' +
ICON APP +
BUTTON 'Button Text' +
OPTION BACK_COLOR WHITE +
|MESSAGE_COLOR WHITE +
|MESSAGE_FONT_COLOR GREEN +
|BUTTON_COLOR WHITE +
|BUTTON_FONT_COLOR GREEN +
|TRANSPARENCY 255

```



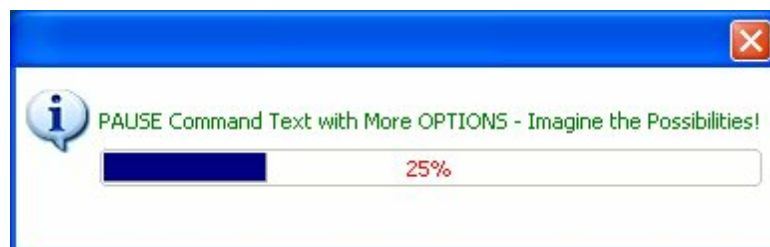
-- Standard PAUSE Command with custom ICON with Themes

```
PAUSE 2 USING +
'Now you can add themes to PAUSE windows!' +
CAPTION 'New PAUSE Command' ICON INFO +
OPTION themename Longhorn
```



-- PAUSE Command with Meter Progress Bar

```
PAUSE 3 USING +
'PAUSE Command Text with More OPTIONS - Imagine the Possibilities!' +
CAPTION ' ' +
OPTION METER_VISIBLE ON +
|METER_VALUE .vProgress +
|METER_TYPE BAR3D +
|METER_BACK_COLOR WHITE +
|METER_BAR_COLOR NAVY +
|METER_FONT_COLOR RED +
|BACK_COLOR WHITE +
|MESSAGE_COLOR WHITE +
|MESSAGE_FONT_COLOR GREEN
```

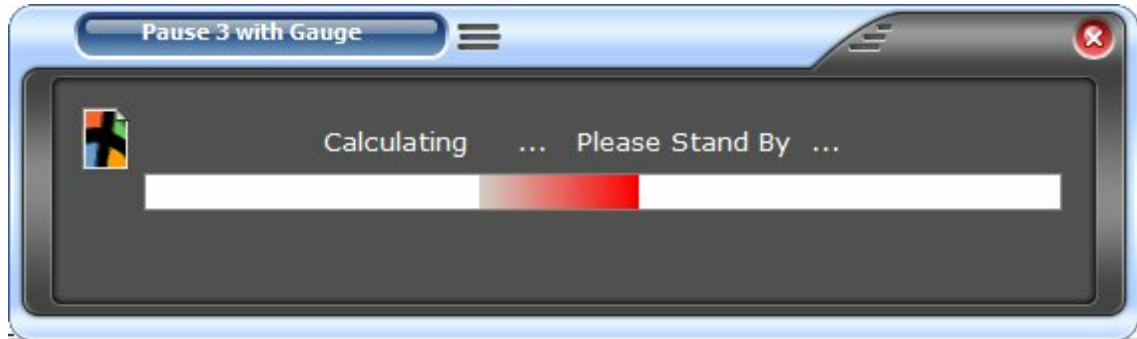


-- PAUSE Command with GAUGE Progress Bar

```

PAUSE 3 USING 'Calculating ... Please Stand By ...' +
CAPTION '          Pause 3 with Gauge ' +
ICON WINDOWS OPTION GAUGE_VISIBLE ON +
|GAUGE_COLOR RED +
|GAUGE_INTERVAL 10 +
|MESSAGE_FONT_NAME VERDANA +
|MESSAGE_FONT_SIZE 10 +
|MESSAGE_FONT_COLOR WHITE +
|THEMENAME Steel Blue

```

**1.1 OPTION Parameters**

These parameters can be used to change the "look and feel" of a PAUSE window. In addition to the parameters below, you can also alter the PAUSE [Message](#), as well as add a [Meter](#) or [Gauge Meter](#).

Parameter	Value	Description
ICON_FILE	value	Specifies the external path and image name for the icon (file size must be 16x16 pixels).
BACK_COLOR	AQUA BLACK BLUE CREAM DARK GRAY FUCHSIA GRAY GREEN LIME LIGHT GRAY MAROON MEDIUM GRAY MINT GREEN NAVY OLIVE PURPLE RED SILVER SKY BLUE TEAL WHITE YELLOW	Changes the color of the WINDOW BACKGROUND area. User can specify the integer value or type one of the predefined values.
BUTTON_COLOR	AQUA BLACK BLUE CREAM	Changes the background color of the button.

	DARK GRAY FUCHSIA GRAY GREEN LIME LIGHT GRAY MAROON MEDIUM GRAY MINT GREEN NAVY OLIVE PURPLE RED SILVER SKY BLUE TEAL WHITE YELLOW	
BUTTON_FONT_COLOR	AQUA BLACK BLUE CREAM DARK GRAY FUCHSIA GRAY GREEN LIME LIGHT GRAY MAROON MEDIUM GRAY MINT GREEN NAVY OLIVE PURPLE RED SILVER SKY BLUE TEAL WHITE YELLOW	Changes the font color of the button.
TRANSPARENCY	0 - 255	Set the transparency to specify a layered window with a translucent color. The transparency value specifies the degree of translucency.
TOP	value	Moves the pause box location, in pixels, from the top of the screen down.
LEFT	value	Moves the pause box location, in pixels, from the left of the screen over.
THEMENAME	value	Specifies one of 86 pre-defined Themes, or a custom Theme loaded into R:BASE. NOTE: All previously defined PAUSE commands which are redefined to use Themes should be thoroughly checked prior to putting into production as objects and text may look substantially different.

1.1.1 Message

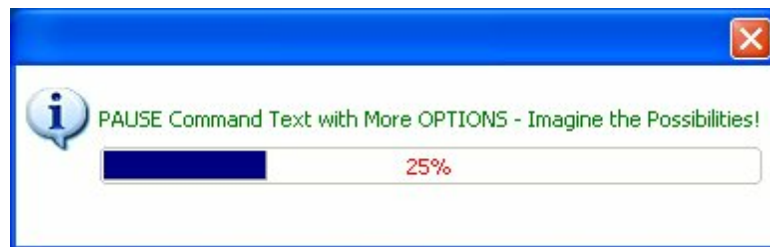
These parameters the message within the PAUSE window.

Parameter	Value	Description
MESSAGE_COLOR	AQUA BLACK BLUE CREAM	Changes the color of the actual message.

	DARK GRAY FUCHSIA GRAY GREEN LIME LIGHT GRAY MAROON MEDIUM GRAY MINT GREEN NAVY OLIVE PURPLE RED SILVER SKY BLUE TEAL WHITE YELLOW	
MESSAGE_FONT_COLOR	AQUA BLACK BLUE CREAM DARK GRAY FUCHSIA GRAY GREEN LIME LIGHT GRAY MAROON MEDIUM GRAY MINT GREEN NAVY OLIVE PURPLE RED SILVER SKY BLUE TEAL WHITE YELLOW	Changes the color of message font.
MESSAGE_FONT_NAME	value	Specifies a font name for the message. Values would consist of the fonts available on the computer.
MESSAGE_FONT_SIZE	value	Specifies the font size.
MESSAGE_FONT_BOLD	ON OFF	Specifies if the message font is bold type.
MESSAGE_FONT_ITALIC	ON OFF	Specifies if the message font is italic type.
MESSAGE_FONT_UNDERLINE	ON OFF	Specifies if the message font is underline type.
MESSAGE_FONT_STRIKEOUT	ON OFF	Specifies if the message font is strikeout type.

1.1.2 Meter

These parameters will display a meter within the PAUSE window.



Parameter	Value	Description
METER_VISIBLE	ON OFF	Displays a meter to show a progress in percentage values.
METER_TYPE	NORMAL BAR3D LED	Three meter options are available.
METER_VALUE	0 to 100	Specifies the percentage to display the meter progress.
METER_BAR_COLOR	AQUA BLACK BLUE CREAM DARK GRAY FUCHSIA GRAY GREEN LIME LIGHT GRAY MAROON MEDIUM GRAY MINT GREEN NAVY OLIVE PURPLE RED SILVER SKY BLUE TEAL WHITE YELLOW	Specifies the color of the meter bar.
METER_BACK_COLOR	AQUA BLACK BLUE CREAM DARK GRAY FUCHSIA GRAY GREEN LIME LIGHT GRAY MAROON MEDIUM GRAY MINT GREEN NAVY OLIVE PURPLE RED SILVER SKY BLUE	Specifies the meter background color

	TEAL WHITE YELLOW	
METER_FONT_COLOR	AQUA BLACK BLUE CREAM DARK GRAY FUCHSIA GRAY GREEN LIME LIGHT GRAY MAROON MEDIUM GRAY MINT GREEN NAVY OLIVE PURPLE RED SILVER SKY BLUE TEAL WHITE YELLOW	Specifies the color of the meter font.
METER_MAX_VALUE	0 to 100	Specifies the maximum percentage to display the <code>meter progress</code> .
METER_COLOR1	AQUA BLACK BLUE CREAM DARK GRAY FUCHSIA GRAY GREEN LIME LIGHT GRAY MAROON MEDIUM GRAY MINT GREEN NAVY OLIVE PURPLE RED SILVER SKY BLUE TEAL WHITE YELLOW	Specifies the color of the meter when using three color segments (green, yellow, red)
METER_COLOR2	AQUA BLACK BLUE CREAM DARK GRAY FUCHSIA GRAY GREEN LIME LIGHT GRAY MAROON MEDIUM GRAY MINT GREEN NAVY OLIVE PURPLE	Specifies the color of the meter when using three color segments (green, yellow, red)

	RED SILVER SKY BLUE TEAL WHITE YELLOW	
METER_COLOR3	AQUA BLACK BLUE CREAM DARK GRAY FUCHSIA GRAY GREEN LIME LIGHT GRAY MAROON MEDIUM GRAY MINT GREEN NAVY OLIVE PURPLE RED SILVER SKY BLUE TEAL WHITE YELLOW	Specifies the color of the meter when using three color segments (green, yellow, red)
METER_COLOR OFF		Sets the color off when using three color segments.

Example:

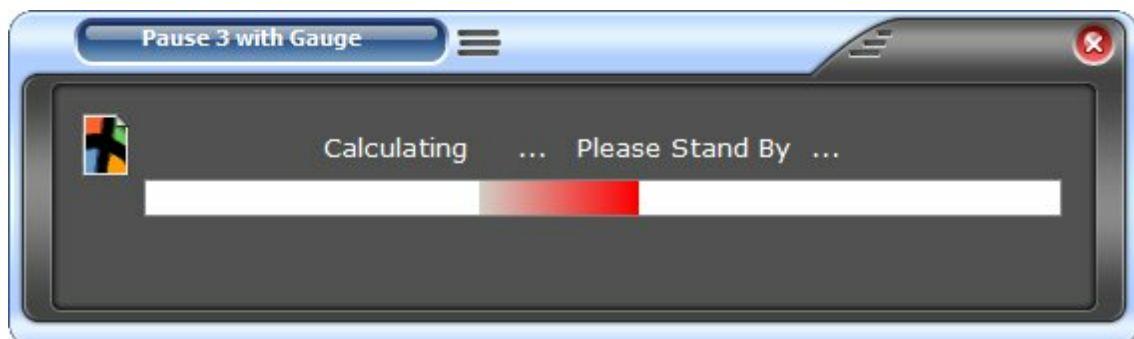
```

PAUSE 3 USING +
'PAUSE Command Text with More OPTIONS - Imagine the Possibilities!' +
CAPTION ' ' +
OPTION METER_VISIBLE ON +
|METER_VALUE .vProgress +
|METER_TYPE BAR3D +
|METER_BACK_COLOR WHITE +
|METER_BAR_COLOR NAVY +
|METER_FONT_COLOR RED +
|BACK_COLOR WHITE +
|MESSAGE_COLOR WHITE +
|MESSAGE_FONT_COLOR GREEN

```

1.1.3 Gauge Meter

These parameters will display an oscillating meter within the PAUSE window.



Parameter	Value	Description
GAUGE_VISIBLE	ON OFF	Displays an oscillating progress gauge.
GAUGE_COLOR	AQUA BLACK BLUE CREAM DARK GRAY FUCHSIA GRAY GREEN LIME LIGHT GRAY MAROON MEDIUM GRAY MINT GREEN NAVY OLIVE PURPLE RED SILVER SKY BLUE TEAL WHITE YELLOW	Specifies the color of the progress gauge.
GAUGE_INTERVAL	10-100	Specifies the speed interval of the oscillating progress gauge.

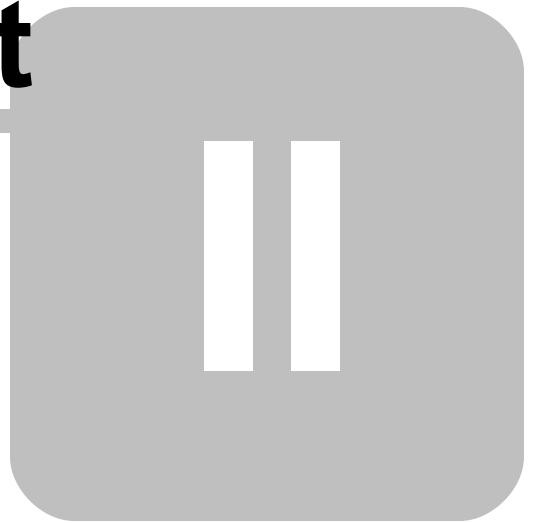
Example:

```

PAUSE 3 USING 'Calculating ... Please Stand By ...' +
CAPTION '                Pause 3 with Gauge ' +
ICON WINDOWS OPTION GAUGE_VISIBLE ON +
|GAUGE_COLOR RED +
|GAUGE_INTERVAL 10 +
|MESSAGE_FONT_NAME VERDANA +
|MESSAGE_FONT_SIZE 10 +
|MESSAGE_FONT_COLOR WHITE +
|THEMENAME Steel Blue

```

Part



2 Feedback

Suggestions and Enhancement Requests:

From time to time, everyone comes up with an idea for something they'd like their software to do differently. This is true of all applications, no less R:BASE.

If you come across an idea that you think might make a nice enhancement to R:BASE, your input is always welcome.

Please submit your suggestion and/or enhancement request to the R:BASE eXtreme 9.1 Developers' Corner Crew (R:DCC) and describe what you think might make a nice enhancement. In R:BASE eXtreme 9.1, the RBG9 R:DCC Client is fully integrated to communicate with the entire development team of R:BASE eXtreme 9.1. From the main Menu Bar, choose "Help" > "RBG9 R:DCC Client".

Unless additional information is needed, you will not receive a direct response. You can periodically check the status of your submitted enhancement request accordingly.

Reporting Bugs:

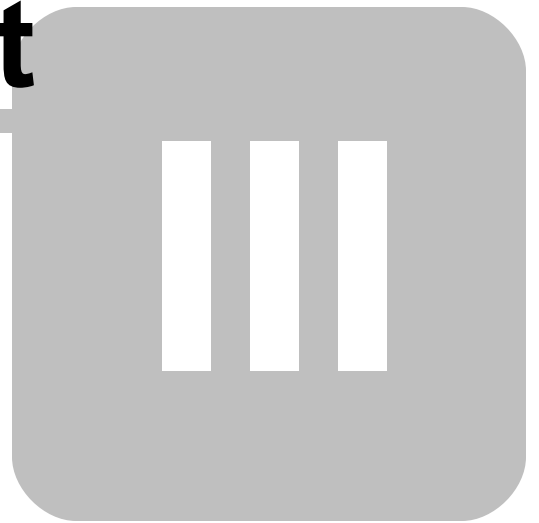
If you experience something you think might be a bug in R:BASE, please report it to the R:BASE eXtreme 9.1 Developers' Corner Crew. In R:BASE eXtreme 9.1, the RBG9 R:DCC is fully integrated to communicate with the entire development team of R:BASE eXtreme 9.1. From the main Menu Bar, choose "Help" > "RBG9 R:DCC Client".

You will need to describe:

- What you did
- What happened
- What version and build of R:BASE you have
- Any error messages R:BASE gave
- What kind of computer you have
- Which operating system you're using
- Anything else you think might be relevant

Unless additional information is needed, you will not receive a direct response. You can periodically check the status of your submitted bug accordingly.

Part



3 Useful Resources

- . R:BASE Home Page: <http://www.rbase.com>
- . R:BASE eXtreme Home Page: <http://www.rbaseextreme.com>
- . Up-to-Date R:BASE Updates: <http://www.rupdates.com>
- . Sample Applications: <http://www.rbasecommunity.com>
- . Building Syntax for PROPERTY Command: <http://www.rbase.com/property>
- . Building Syntax for GETPROPERTY Command: <http://www.rbase.com/getproperty>
- . General R:BASE Syntax: <http://www.rsyntax.com>
- . Technical Documents - From The Edge: <http://www.razzak.com/fte>
- . More Sample Applications: <http://www.razzak.com/sampleapplications>
- . Education and Training: <http://www.rbaseuniversity.com>
- . Upcoming Events: <http://www.rbase.com/events>
- . R:BASE Beginners Tutorial <http://www.rtutorial.com>

Index

- B -

box location 6

- F -

feedback 14

- G -

gauge 11

- I -

icon 6

- M -

message options 7

meter 2, 9, 11

multiline PAUSE 2

- O -

oscillating 11

- P -

PAUSE 2

percentage 9

progress bar 2, 9, 11

- R -

resources 16

- T -

Theme 6

transparency 6

- W -

window options 6

Back Cover